



Paul B. Beeson
Emerging Leaders
Career Development
Awards in Aging

2025 Beeson Annual Meeting
November 19 – 21, 2025
Program Book - Table of Contents

1. Agenda
2. Beeson Scholars' Meeting Mentor Assignments
3. Travel Awardees' Mentor-Mentee Assignments
4. Consultancy Assignments
5. Aims Page Workshop Assignments
6. Datablitz! Assignments
7. Speed Mentoring Assignments
8. 2025 Beeson Scholars and 2025 Beeson Travel Awardees
9. Meeting Attendee Contact List (Clin-STAR/Beeson)
10. Thursday dinner – map to Swingers, the mini golf venue
11. Yours Truly Floor Plans
12. Safety Plan
13. Zoom Instructions

**Tag us in your Beeson Meeting 2025 posts on BlueSky and X:
#BeesonScholar #Beeson2025**

Funding for this meeting was made possible, in part, by 1 R13AG058415 from the National Institute on Aging, **Kristine Yaffe, corresponding PI, Thomas Gill, Co-PI, Andrea Gilmore-Bykovskiy, Co-PI.** Meals for the 2025 Beeson Annual Meeting, not covered by the registration fee, are underwritten by the American Federation for Aging Research.



Paul B. Beeson
Emerging Leaders
Career Development
Awards in Aging

Beeson Annual Meeting
[Yours Truly, DC](#), Washington, DC November 19 – 21, 2025

All sessions marked Virtual below can be accessed through this zoom link:
<https://us02web.zoom.us/j/85896393400?pwd=bte2z60PYWCJnN8W6Y3faGlscu2sZG.1>

Wednesday, November 19, 2025 (Jointly with the Clin-STAR Meeting)

4:00 – 5:00 pm

Room 9 & 10 pre function

Registration: pick up name tag

4:45 – 5:15 pm

Rooms 9 & 10

**Meet up: 2025 Beeson Scholars and Beeson Program
Advisory Committee**

5:15 – 6:00 pm

Rooms 9 & 10

Welcome and new Beeson scholar introductions

AFAR Welcome

[Sara Espinoza, MD](#)

AFAR Board Member

Professor of Medicine, Cedars-Sinai

Beeson Program Advisory Committee

Beeson Leadership Welcome

**Andrea Gilmore-Bykovski, PhD, RN, Thomas Gill, MD, Kristine Yaffe,
MD, Multiple PIs Beeson Conference Grant**

[Thomas M. Gill, MD](#)

Humana Foundation Professor of Medicine (Geriatrics) and Professor of
Epidemiology (Chronic Diseases) and of Investigative Medicine
Yale School of Medicine

Beeson Program Advisory Committee; 1997 Beeson

NIA Welcome and introduction of new Beeson Scholars

*(Backup presenter: [Angela Jefferson, PhD](#), Beeson Program Advisory
Committee; 2007 Beeson)*

6:30 – 8:00 pm

Rooms 9 & 10

Clin-STAR and Beeson Dinner

8:00 – whenever

Rooms 11 & 12

Sing-along

Singers and non-singers welcome, no sign-up necessary.

Thursday, November 20, 2025

7:00 – 8:45 am

Rooms 9 & 10

Breakfast

7:30 - 8:30 am

Rooms 7 & 8

Clin-STAR Speed Mentoring (*by advance sign-up only*) Interact with Clin-STAR and NIA leadership, and Beeson Scholars

7:45 – 8:30 am

Beeson Mentor-Mentee meetings – assigned for 2023, 2024 and 2025 Beeson Scholars. Check the program book for the schedule, some meetings are also during the free time (2:30 – 4:30 pm).

8:45 – 9:00 am

Rooms 9 & 10

[VIRTUAL]

In memoriam: Remembering [Jeremy Walston, MD](#) (1998 Beeson) and [Eddie Koo, MD](#) (1995 Beeson)

[Cynthia M. Boyd, MD, MPH](#)

Professor, Director of Geriatrics
Johns Hopkins University School of Medicine
2009 Beeson Scholar

[Thomas M. Gill, MD](#)

Humana Foundation Professor of Medicine (Geriatrics) and Professor of Epidemiology (Chronic Diseases) and of Investigative Medicine
Yale School of Medicine
Beeson Program Advisory Committee; 1997 Beeson

9:00 – 10:00 am

Room 9 & 10

[VIRTUAL]

Robin Barr Keynote Address

Robin Barr, PhD was the DEA Director at NIA until he retired in early 2020 after 33 years with the Institute. He oversaw training initiatives, anticipated the need for new kinds of training, and worked with NIH peers to steer overall research training policy. He led efforts to substantially expand NIA's career development awards program. Dr. Barr was instrumental in transitioning the Beeson Program from private sponsorship to its unique public-private partnership.

Introduction: [Matthew Growdon, MD](#)

University of California, San Francisco (2024 Beeson)

FDA Approval and Aging: What is the Real Bottleneck for Translational Geroscience

[Norman E. "Ned" Sharpless, MD](#)

Co-Founder & Managing Director
Jupiter Bioventures, 2003 Beeson

Thursday, November 20, 2025 (continued)

10:00 – 11:30 am

Room 9 & 10

[VIRTUAL]

Expanding the Scope of Leadership

Panelists share their different leadership roles experiences, including roles in research, academia, government, policy, philanthropy and as an entrepreneur. They will offer their thoughts on necessary skills, how to pivot when encountering unexpected challenges and how to decide what leadership roles to take on.

Introduction and moderator: [Brienne Miner, MD, MHS](#)

Yale School of Medicine (2021 Beeson)

Panelists:

[Amy Kind, MD, PhD](#), University of Wisconsin School of Medicine and Public Health (2010 Beeson)

[Ned Sharpless, MD](#), Jupiter Bioventures (2003 Beeson)

[Albert L. Siu, MD](#), Icahn School of Medicine at Mount Sinai

[Kathleen Unroe, MD](#), Indiana University School of Medicine (2014 Beeson)

11:30 – 12:00 pm

Break

12:00 – 1:00 pm

Room 9 & 10

[VIRTUAL]

Graduating Scholars Presentations: Group 1

Introduction: [Dan Matlock, MD, MPH](#) (2011 Beeson)

University of Colorado Anschutz

[Elizabeth Goldberg, MD, ScM, FACEP](#) (2019 Beeson)

University of Colorado

[Myrick Shinall, MD, PhD, FACS](#) (2020 Beeson)

Vanderbilt University

[Nicole Rogus-Pulia, PhD, CCC-SLP](#) (2020 Beeson)

University of Wisconsin-Madison

[Anand Iyer, MD, MSPH](#) (2020 Beeson)

University of Alabama at Birmingham

[CLIN-STAR MEETING ADJOURNS]

Thursday, November 20, 2025 (continued)

1:00 – 2:30 pm
Room 9 & 10

Lunch – Consultancies and Aims Workshops (sign-up only)

Consultancy Group 1 – room 13
Consultancy Group 2 – room 14
Consultancy Group 3 – room 15
Aims Workshop Group 1 – room 2 (Lobby level)
Aims Workshop Group 2 – room 3 (Lobby level)
Aims Workshop Group 3 – room 11
Aims Workshop Group 4 – room 12

2:30 – 4:30 pm

Free time/Mentoring Activities

Note: Mentor-mentee meetings have been arranged for 2023, 2024, and 2025 Beeson Scholars, as well as Beeson Travel Awardees. Please refer to the schedules in the Program Book.

4:30 – 6:00 pm

Data Blitz!

Also known as “lightning talks” this is the academic equivalent of speed dating – a fast-track vehicle to understand research which can lead to collaborations and other networking opportunities with other Scholars. Each session involves a research theme and 8 to 10 presenters. This is a chance to share a snapshot of your research with an audience of peers and learn about what other Scholars are working on. There will be time for questions after each presentation. *Meeting attendees who are not presenting a Datablitz are encouraged to join a group as a spectator.*

Group 1 – room 11
Group 2 – room 13
Group 3 – room 14
Group 4 – room 15
Group 5 – room 2 (Lobby level)
Group 6 – room 3 (Lobby level)

6:00 – 9:00 pm

Swinger’s Golf Club, dinner and a game of mini golf! A short eight-minute walk from the hotel, 1330 19th St NW, Washington, DC

Friday, November 21, 2025

7:00 – 9:00 am

Room 9 & 10

Breakfast

Note: A private breakfast meeting for the Beeson Program Advisory Committee and other invited participants will be in Room 11 from 7:30 – 8:45 am

8:00 – 9:00 am

Room 7 & 8

Speed Mentoring, by advance sign-up only

See schedule in Program Book.

9:00 – 10:00 am

Room 9 & 10

[VIRTUAL]

Graduating Scholars Presentations: Group 2

Introduction: [Donovan Maust, MD](#) (2014 Beeson)
University of Michigan

[Lisa Kilpela, PhD](#) (2019 Beeson)
UT Health San Antonio

[Veerawat Phongtankuel, MD](#) (2019 Beeson)
Weill Cornell Medicine

[Claire Ankuda, MD, MPH](#) (2020 Beeson)
Icahn School of Medicine at Mount Sinai

[Guido Falcone, MD, ScD, MPH](#) (2018 Beeson)
Yale School of Medicine

10:00 – 11:30 am

Room 9 & 10

[VIRTUAL]

How to Become an Advocate for your Research

This session will provide an overview of what it takes to make public policy advocacy a part of your repertoire. The speakers will address why it makes sense for you to weigh in on critical aging and health issues, how to frame your own work to fit into the policy and legislative world, and how to go about doing the advocacy with legislators and regulators.

Introductions: [Katie Schenning, MD, MPH, MCR](#)
Oregon Health & Science University

Speakers:

[Brian Lindberg](#)
Vice President, Health and Aging Policy,
Healthsperien LLC

[Ashley Carson, JD](#)
Executive Director
Center for Hope & Safety

Friday, November 21, 2025 (continued)

11:30 am – 1:00 pm

Room 9 & 10

Lunch – Consultancies and Aims Workshops (sign-up only)

Consultancy Group 1 – room 11

Consultancy Group 2 – room 13

Aims page Group 1 – room 14

Aims page Group 2 – room 15

1:00 pm

Adjourn

**Beeson Scholar Mentor-Mentee Meetings
Schedule by Mentor**

Committee	Thursday, Nov 20 7:45 - 8:30 am	Thursday, Nov 20 2:30 - 3:15 pm	Thursday, Nov 20 3:15 - 4:00 pm		
Where to meet	Breakfast	Lobby	Lobby		
Sara Espinoza	Christopher Mosher	Sandra Aleksic	Daniel Roh		
Tom Gill	Keith Cole	Matthew Miller	Daniel Shalev		
Andrea Gilmore-Bykovskiy	X	X	X		
Angela Jefferson	Hina Faisal	Michelle Fullard	Sara LaHue		
Sei Lee		Sandra Shi			
Dan Matlock	Christy Cauley	Adam Faye	Bharati Kochar	2020, 2021 and 2022 Scholars have not been assigned to mentors.	
Donovan Maust	Matthew Growdon	Michael Nanna	JinJao Wang		
Manish Shah		Krishna Patel	Anna Parks		
Alex Smith	Shannon McCurdy	Cameron Gettel	Lisa Simon		
Mike Steinman		Erin DeMartino			
Caroline Stephens		Sarah Nouri			
Kathleen Unroe	James Deardorff	Lucia Madariaga	Cecilia Canales		
Kristine Yaffe	X	X	X		
Assignments					
<p>One of features of the Beeson Program is that we match current scholars with members of the program committee. One of the roles of the members of the Program Committee is to serve as external mentors to the Beeson Scholars. This is an informal mentorship and will give active Scholars the opportunity to discuss career and research issues with another senior investigator in aging research outside his/her own institution. Most of the interactions will be at this meeting, but Scholars may also call on this external mentor during the Beeson Award. Assignments are listed above (note this sheet has two tabs, assignments per mentor, and assignments per scholar.) For Scholars whose mentors</p>					

Beeson Scholar Mentor-Mentee Meetings

2023 Scholars			
Aleksic, Sandra	Einstein College of Medicine	The Role of Hypothalamic Dysfunction in Accelerating Aging in Humans	Sara Espinoza
Hampson, Lindsay	UCSF	Improving Patient-Centered Decision-Making for Stress Urinary Incontinence Treatment in Older Men	Donovan Maust
Kochar, Bharati	Massachusetts General Hospital	Incorporating Geriatric Constructs into Management of Inflammatory Bowel Diseases in Older Adults	Emily Finlayson/Dan Matlock
Roh, Daniel	Boston University Chobanian & Avedisian School of Medicine	Targeting Senescence to Improve Wound Healing in Aging	Sara Espinoza
2024 Scholars			
Cauley, Christy	Harvard Medical School/Mass General Hospital	Improving Biopsychosocial Outcomes of Older Adults Facing Fecal Ostomy Surgery	Dan Matlock
DeMartino, Erin	Mayo Clinic Rochester	Assessing Needs and Advancing Dignity-Conserving Care for Hospitalized, Incarcerated Older Adults: Clinical Data, Patient Experience, and Policy Evaluation	Andrea Gilmore-Bykovkyi/Mike Steinman
Faye, Adam	New York University School of Medicine	Optimal Preoperative Care for Older Adults with Inflammatory Bowel Disease	Dan Matlock
Fullard, Michelle	University of Colorado Denver	Improving Shared Decision-Making for Older Adults with Cognitive Impairment: Parkinson's Disease as a Model	Angela Jefferson
Growdon, Matthew	University of California, San Francisco	Optimizing medication use and support among people with dementia who live alone	Donovan Maust
Koran, Mary Ellen	Vanderbilt University Medical Center	Genetic architecture of age of onset of amyloid positivity: Integrating imaging and genetic tools to identify novel drivers of disease	NOT ATTENDING
LaHue, Sara	University of California, San Francisco	Characterizing the Relationship Between Delirium and Biological Age in Traumatic Brain Injury: Implications for Cognitive Decline in Older Adults	Angela Jefferson
Miller, Matthew	University of California, San Francisco	Tailoring Rehabilitation to the needs of Older Adults with Cognitive Impairment and Dementia	Tom Gill
Nanna, Michael	Yale University School of Medicine	Estimating the treatment effect of cardiovascular medications to modify the risk for future cognitive decline in older adults	Donovan Maust

Beeson Scholar Mentor-Mentee Meetings

Nouri, Sarah	University of California, San Francisco	CARES: A Caregiver-Facing Digital Symptom Assessment Tool for Marginalized Older Adults with Serious Illness	Andrea Gilmore-Bykovkyi/Caroline Stephens
Parks, Anna	University of Utah	Advancing patient-centered decision making in older adults with venous thromboembolism	Manish Shah
Shalev, Daniel	Weill Cornell Medicine	CoCM-PAL: Adapting Collaborative Care for Older Adults with Serious Illness and Comorbid Depression or Anxiety Receiving Ambulatory Palliative Care	Tom Gill
Wang, Jinjiao	University of Rochester School of Nursing	Deprescribing for Post-Acute Care Older Patients with Dementia in Home Health Care	Kristine Yaffe/Donovan Maust
2025 Scholars			
Canales, Cecilia	University of California, Los Angeles	Improving Postsurgical Cognitive Outcomes in Limited English Proficient Older Adults with a Perioperative Care Partner Program: A Pilot Pragmatic Randomized Controlled Trial	Kathleen Unroe
Cole, Keith	Vanderbilt University Medical Center	The Proteomic Signature of Dual Decline in Gait and Cognition	Tom Gill
Deardorff, James	University of California, San Francisco	Enhancing prognosis communication for older adults in skilled nursing facilities	Kathleen Unroe
Faisal, Hina	Houston Methodist Hospital	Virtual Reality-Based Cognitive Stimulation Games for Enhancing Attention and Preventing Delirium in Older Surgical Patients with Cognitive Impairment: A Randomized Controlled Pilot Trial	Angela Jefferson
Gettel, Cameron	Yale University School of Medicine	Development and pilot testing of a novel text messaging intervention to improve emergency department care transitions among care partners of persons living with cognitive impairment	Alex Smith
Madariaga, Lucia	University of Chicago	BeFitMe II: Applying User-Centered Co-Design and Implementation Science to Enhance Prehabilitation for Frail Older Adults Undergoing Lung Cancer Surgery	Kathleen Unroe
McCurdy, Shannon	University of Pennsylvania	The Impact of Frailty on Disease Relapse and Therapy Intensity in Older Adults with Acute Myeloid Leukemia: Biomarkers and Treatment Selection	Alex Smith
Mosher, Christopher	Duke University	Investigating Senolytic Properties in Pulmonary Rehabilitation and Metformin in COPD Exacerbations (INSPIRE-COPD-E).	Sara Espinoza
Patel, Krishna	Icahn School of Medicine at Mount Sinai	Opportunistic use of existing chest CT data for frailty screening	Manish Shah
Shi, Sandra	Harvard Medical School	Strengthening Recovery - Integrating Intrinsic Capacity Care into Post-Acute Skilled Nursing Facilities	Andrea Gilmore-Bykovkyi/Sei Lee
Simon, Lisa	Brigham and Women's Hospital / Harvard Medical School	Evaluating the effect of a new Medicare dental benefit on the health of older adults	Alex Smith

**Beeson Travel Awardees
Mentor-Mentee Meetings
Thursday, November 20, 2025, 2:30 - 3:00 pm
Meet outside Room 9/10**

first	last	institution	specialty	Beeson Scholar Mentor
James	Crick	The Ohio State University	Fall prevention, transitions of care, community paramedicine, community re-integration, physical therapy	Jason Falvey
Alison	DeDent	Indiana University	Interstitial lung disease, Chronic lung disease, Access to Care, Collaborative Care Models, Geographic and socioeconomic disparities, Telehealth	Carolyn Presley
Cara	Donohue	Vanderbilt University Medical Center	dysphagia; swallowing; pulmonary function; cough function; post-intensive care syndrome; geriatrics; frailty	Nicole Rogus-Pulia
Julia	Scarpa	Weill Cornell Medicine	Anesthesiology, Neurophysiology, Cerebrovascular Dynamics, Cognitive Outcomes, Heart Failure, Aerospace Technology	Brienne Miner
Mfon	Umoh	Johns Hopkins University	Cognitive decline and dementia, Delirium, Health equity and disparities, Health services research	Jasmine Travers Altizer
Stephanie	Zuo	University of Virginia	Long-term care, overactive bladder, urinary tract infections, pelvic floor disorders, implementation science, mixed methods research	Scot Bauer

Consultancies

Thursday, November 20

1:00 - 2:30 pm

Room: 13 Lauren Ferrante Yale University
Moderators: Hank Paulson University of Michigan

Group 1

Krishna	Patel	Icahn School of Medicine at Mount Sinai
Mfon	Umoh	Johns Hopkins University School of Medicine
Christy	Cauley	MassGeneral Brigham
Jason	Falvey	University of Maryland SOM
Lisa	Kilpela	UT Health San Antonio
Lauren	Hunt	UCSF

Observer

Elizabeth Dzeng UCSF

Thursday, November 20

1:00 - 2:30 pm

Room: 14 Cynthia Boyd Johns Hopkins University School of Medicine
Moderators: Duke Han University of Southern California

Group 2

Sandra	Aleksic	Albert Einstein College of Medicine
Anna	Parks	University of Utah
Erin	DeMartino	Mayo Clinic
Brienne	Miner	Yale University
Mina	Sedrak	UCLA
Lindsay	Hampson	UCSF
Cara	Donohue	Vanderbilt University Medical Center

Observer

Carmen Quatman The Ohio State University

How a Consultancy Session works:

This is a popular and effective group problem-solving activity known as a “consultancy.” This is structured to enable a set of people with a variety of knowledge and expertise to provide support, new perspectives, and ideas to one another, particularly around an important or difficult challenge.

Each Scholar will get approximately 10 minutes. Each Scholar will have 2-3 minutes or so to present what he/she views as **the major career challenge he/she are facing (or will soon face)**. This may include, but is certainly not limited to:

- Time Management
- Balancing Career and Family
- Strategies for promotion
- Balancing research, clinical, teaching and administrative responsibilities
- Issues related to your lab/team members (supervision, quality control, hiring, firing, disciplinary action, etc.)
- Transitioning relationship with your mentor(s).
- Finding/solidifying your niche, area of expertise

Following each Scholar's presentation, the group will ask clarifying questions for the next one-two minutes. For the bulk of the remainder of the time, the Scholar will receive feedback and advice from the group. In the last minute or so, the Scholar will then have a chance to respond to the ideas presented.

We will follow a strict timetable, so that each person will have the same opportunity for constructive feedback.

Consultancies

Thursday, November 21

1:00 - 2:30 pm

Room: 15 Charlie Brown Stanford University
Moderators: Amy Jo Kind University of Wisconsin-Madison

Group 3

Katherine	Buck	Ohio State University
Miyeon	Jung	Indiana University School of Nursing
James	Deardorff	UCSF
Sachin	Shah	Massachusetts General Hospital
Elissa	Kozlov	Rutgers School of Public Health
Matthew	Miller	UCSF
Lisa	Simon	Brigham and Women's Hospital

Observer

Chris	Mosher	Duke University
-------	--------	-----------------

How a Consultancy Session works:

This is a popular and effective group problem-solving activity known as a “consultancy.” This is structured to enable a set of people with a variety of knowledge and expertise to provide support, new perspectives, and ideas to one another, particularly around an important or difficult challenge.

Each Scholar will get approximately 10 minutes. Each Scholar will have 2-3 minutes or so to present what he/she views as **the major career challenge he/she are facing (or will soon face)**. This may include, but is certainly not limited to:

- Time Management
- Balancing Career and Family
- Strategies for promotion
- Balancing research, clinical, teaching and administrative responsibilities
- Issues related to your lab/team members (supervision, quality control, hiring, firing, disciplinary action, etc.)
- Transitioning relationship with your mentor(s).
- Finding/solidifying your niche, area of expertise

Following each Scholar's presentation, the group will ask clarifying questions for the next one-two minutes. For the bulk of the remainder of the time, the Scholar will receive feedback and advice from the group. In the last minute or so, the Scholar will then have a chance to respond to the ideas presented.

We will follow a strict timetable, so that each person will have the same opportunity for constructive feedback.

Consultancies

Friday, November 21

11:30 am - 1:00 pm

Room: 11

Moderators: Dae Kim Harvard University
Rebecca Brown University of Pennsylvania

Group 1

Courtney	Balentine	University of Wisconsin- Madison
James	Crick	Ohio State University
Alison	DeDent	Indiana University
HINA	FAISAL	Houston Methodist Hospital
Elizabeth	Goldberg	University of Colorado
Maria Lucia	Madariaga	University of Chicago
Veerawat	Phongtankuel	Weill Cornell Medicine

Friday, November 21

11:30 am - 1:00 pm

Room: 13

Moderators: Makoto Ishii UT Southwestern Medical Center
Caroline Stephens University of Utah College of Nursing

Group 2

Carolyn	Presley	The Ohio State University
Katie	Schenning	Oregon Health & Science University
Carolyn	Seib	Stanford University School of Medicine
Daniel	Shalev	Weill Cornell Medicine
Sandra	Shi	Hebrew SeniorLife
Jinjiao	Wang	UT San Antonio Health Science Center
Stephanie	Zuo	University of Virginia

How a Consultancy Session works:

This is a popular and effective group problem-solving activity known as a “consultancy.” This is structured to enable a set of people with a variety of knowledge and expertise to provide support, new perspectives, and ideas to one another, particularly around an important or difficult challenge.

Each Scholar will get approximately 10 minutes. Each Scholar will have 2-3 minutes or so to present what he/she views as **the major career challenge he/she are facing (or will soon face)**. This may include, but is certainly not limited to:

- Time Management
- Balancing Career and Family
- Strategies for promotion
- Balancing research, clinical, teaching and administrative responsibilities
- Issues related to your lab/team members (supervision, quality control, hiring, firing, disciplinary action, etc.)
- Transitioning relationship with your mentor(s).
- Finding/solidifying your niche, area of expertise

Following each Scholar's presentation, the group will ask clarifying questions for the next one-two minutes. For the bulk of the remainder of the time, the Scholar will receive feedback and advice from the group. In the last minute or so, the Scholar will then have a chance to respond to the ideas presented.

We will follow a strict timetable, so that each person will have the same opportunity for constructive feedback.

Thursday, November 20, 1:00 - 2:30 pm

Aims Page Workshop

Room: 2

Group 1

R01	Tim	Anderson	University of Pittsburgh
R01	Scott	Bauer	UCSF
R21	Danny	Roh	Boston University School of Medicine
R01	Sandra	Shi	Hebrew SeniorLife
R01	Jinjiao	Wang	UT San Antonio Health Science Center

Moderators

Malaz	Boustani	Indiana University School of Medicine
Harvey	Cohen	Duke University

Thursday, November 20, 1:00 - 2:30 pm

Aims Page Workshop

Room: 3

Group 2

K23	Alison	DeDent	Indiana University
R01	Felipe	Jain	Mass General Hospital / Harvard
R01	Carolyn	Presley	The Ohio State University
ASCENT U54	Daniel	Shalev	Weill Cornell Medicine
R43/44	Jasmine	Travers Altizer	New York University Rory Meyers College of Nursing

Moderators

Ken	Covinsky	UCSF
Julie	Bynum	University of Michigan

Thursday, November 20, 1:00 - 2:30 pm

Aims Page Workshop

Room: 11

Group 3

R01	Courtney	Balentine	University of Wisconsin- Madison
R21	Sikandar	Khan	Indiana University School of Medicine
R01	Katie	Schenning	Oregon Health & Science University
PCORI	Carolyn	Seib	Stanford University School of Medicine
R01	Victoria	Tang	University of Texas-Health Houston

Moderators

Jeffrey	Caterino	The Ohio State University
Mark	Lachs	Weill Cornell Medicine

Thursday, November 20, 1:00 - 2:30 pm

Aims Page Workshop

Room: 12

Group 4

K76/23	James	Crick	Ohio State University
PCORI	Elizabeth	Goldberg	University of Colorado
R01	Nicole	Rogus-Pulia	University of Wisconsin-Madison
GEMSSTAR	Julia	Scarpa	Weill Cornell Medicine
GEMSSTAR	Stephanie	Zuo	University of Virginia

Moderators

Alison	Moore	UCSD
Mike	Steinman	UCSF

Friday, November 21, 11:30 am - 1:00 pm

Aims Page Workshop

Room: 14

Group 1

R01	Jason	Falvey	University of Maryland SOM
R35	Anna	Parks	University of Utah
R01	Victoria	Tang	University of Texas-Health Houston

Moderators

Tony	Rosen	Weill Cornell Medicine
Louise	Walter	UCSF

Friday, November 21, 11:30 am - 1:00 pm

Aims Page Workshop

Room: 15

Group 2

R01	Sikandar	Khan	Indiana University School of Medicine
Fndn	Brienne	Miner	Yale University
R01	Sachin	Shah	Massachusetts General Hospital
K76	Mfon	Umoh	Johns Hopkins University School of Medicine

Moderators

Sei	Lee	University of California, San Francisco
Donovan	Maust	University of Michigan

**Beeson Meeting
Datablitz Assignments**

FIRST:	LAST:	INSTITUTION:	research interest key words	group
Sandra	Aleksic	Einstein College of Medicine	hypothalamus, endocrine, MRI, brain aging, frailty, metabolism	4
Timothy	Anderson	University of Pittsburgh	hospital medicine, deprescribing, chronic disease management, transitions of care	1
Courtney	Balentine	University of Wisconsin Madison	Surgery; Implementation science; Causal inference; Clinical trials	3
Scott	Bauer	UCSF	geriatric urology, translational geroscience, primary care, frailty, veterans, incontinence	4
Katherine	Buck	The Ohio State University	emergency medicine, pneumonia, diagnostics	4
Cecilia	Canales	David Geffen School of Medicine, UCLA	frailty, postoperative outcomes especially neurocognitive disorders, underserved elders	3
Christy	Cauley	Harvard Medical School/Mass General Hospital	Surgery, ostomy, colorectal, communication, intervention development, clinical trials	3
Sevdnur	Cizginer	Harvard Medical School	geriatric surgery, implementation science, care transition, colorectal surgery, care models, perioperative care	3
Keith	Cole	Vanderbilt University Medical Center	physical therapy, mobility, cognitive impairment, dual-decline, dual-task, instrumental activities of daily living, gait	5
James	Crick	Ohio State University	Fall prevention, transitions of care, community paramedicine, community re-integration, physical therapy	5
James	Deardorff	University of California, San Francisco	post-acute care, skilled nursing facility, prognostic modeling	1
Alison	DeDent	Indiana University	Interstitial lung disease, Chronic lung disease, Access to Care, Collaborative Care Models, Geographic and socioeconomic disparities, Telehealth	6
Erin	DeMartino	Mayo Clinic Rochester	Ethics, health policy, mixed methods, incarceration	2
Cara	Donohue	Vanderbilt University Medical Center	dysphagia; swallowing; pulmonary function; cough function; post-intensive care syndrome; geriatrics; frailty	6
Elizabeth	Dzeng	University of California, San Francisco	palliative care, serious illness care, end-of-life care, institutional cultures and policies, social sciences, human centered design, community-engaged research,	2
Hina	Faisal	Houston Methodist Hospital	Delirium	6
Jason	Falvey	University of Maryland School of Medicine	Disability, trauma, hip fracture, neighborhoods, disparities, aging in place, resilience, epidemiology	2
Adam	Faye	NYU Langone Health	Frailty, Sarcopenia, Inflammatory Bowel Disease, Surgical Outcomes	4
Cameron	Gettel	Yale University School of Medicine	emergency, care transitions, mHealth, care partner	2

**Beeson Meeting
Datablitz Assignments**

Parag	Goyal	Weill Cornell Medicine	heart failure, polypharmacy, deprescribing	1
Meredith	Greene	Indiana University School of Medicine	HIV/AIDS, Geriatric Syndromes, Comprehensive Geriatric Assessment, Models of Care	5
Matthew	Growdon	University of California, San Francisco	Dementia, Prescribing Quality, Deprescribing, Living Arrangements	1
Lindsay	Hampson	University of California, San Francisco	surgery, urology, quality of life, patient decision-making, incontinence, value-based care, decision aid, treatment preferences	3
Lauren	Hunt	University of California, San Francisco	hospice, palliative care, dementia, financialization, Medicare data	6
Felipe	Jain	Harvard Medical School and Massachusetts General Hospital	digital mental health, AI, family caregiving, mentalization, mindfulness	2
Miyeon	Jung	Indiana University School of Medicine	Heart failure, heart-brain connection, cognitive dysfunction, mild cognitive impairment, non-pharmacological interventions, virtual reality, attention	1
Sikandar	Khan	Indiana University School of Medicine	Acute Respiratory Failure, ICU Delirium, Post-Intensive Care Syndrome, ICU-related Cognitive Dysfunction, Post-ICU Cognitive and Physical Aging, Oxidative	6
Bharati	Kochar	Massachusetts General Hospital	Frailty, Cognition, Inflammation, Crohn's disease, ulcerative colitis, gastroenterology	4
Elissa	Kozlov	Rutgers School of Public Health	mental health, mHealth, AI, palliative care, Medical Aid in Dying	2
Sara	LaHue	University of California, San Francisco	delirium, traumatic brain injury, geroscience, cognitive impairment, bilingualism	4
Maria Lucia	Madariaga	University of Chicago	thoracic surgery, prehab, frailty, implementation science	3
Meghan	Mattos	University of Virginia	Alzheimer's disease, digital interventions, mild cognitive impairment, cognitive behavioral therapy, sleep, insomnia, clinical trials	6
Shannon	McCurdy	University of Pennsylvania	Frailty, Leukemia, Allogeneic Transplantation	6
Matthew	Miller	University of California, San Francisco	Rehabilitation, Cognitive Impairment, Implementation Science, Physical Function	5
Brienne	Miner	Yale University	sleep, aging, dementia, alzheimer's disease	6
Christopher	Mosher	Duke University	COPD, pulmonary rehab, gerotherapeutics, senolytics	4
Michael	Nanna	Yale University School of Medicine	Cardiovascular disease, risk stratification, clinical trials, causal inference	1
Sarah	Nouri	University of California, San Francisco	serious illness communication, health disparities, digital health	2

**Beeson Meeting
Datablitz Assignments**

Anna	Parks	University of Utah	care of older adults with non-malignant hematologic disease; shared decision-making for older adults with blood diseases; outcomes and aging-centered	1
Krishna	Patel	Icahn School of Medicine at Mount Sinai	cardiac imaging, frailty, quality of life, ischemic heart disease	1
Carolyn	Presley	The Ohio State University	geriatric oncology, functional status, supportive care, mobility, behavioral interventions, models of healthcare delivery	6
Carmen	Quatman	The Ohio State University Wexner Medical Center	Musculoskeletal injury and health, fall prevention, human performance	3
Daniel	Roh	Boston University Chobanian & Avedisian School of Medicine	senescence, wound healing, senolytic, tissue repair	4
Julia	Scarpa	Weill Cornell Medicine	Anesthesiology, Neurophysiology, Cerebrovascular Dynamics, Cognitive Outcomes, Heart Failure, Aerospace Technology	5
Katie	Schenning	Oregon Health & Science University	Delirium, Postoperative Neurocognitive Disorders, Anesthesia, Surgery, Frailty, Clinical Trials, Blood-based biomarkers	3
Mina	Sedrak	UCLA	Geroscience, Cancer and Aging, Senescence, Senolytics, Clinical Trials	4
Carolyn	Seib	Stanford University School of Medicine	primary hyperparathyroidism, geriatric surgery, comparative effectiveness	3
Sachin	Shah	Massachusetts General Hospital/Harvard Medical School	anti-amyloid therapy, anticoagulants, high-risk medications, ADLs, net clinical benefit	1
Daniel	Shalev	Weill Cornell Medicine	Palliative care, psychiatry, behavioral health, health services research, serious mental illness, depression, anxiety	2
Sandra	Shi	Harvard Medical School	Patient-centered outcomes after hospitalizations, shared decision-making, frailty	5
Lisa	Simon	Brigham and Women's Hospital / Harvard Medical School	health services research, econometrics, Medicare, oral health	5
Victoria	Tang	McGovern Medical School at UTHealth Houston	surgery, mental health, palliative care	3
Jasmine	Travers Altizer	New York University Rory Meyers College of Nursing	long-term care, disparities, workforce, aging	2
Mfon	Umoh	Johns Hopkins University School of Medicine	Cognitive decline and dementia, Delirium, Health equity and disparities, Health services research	6
Jennifer	Vincenzo	University of Arkansas for Medical Sciences	implementation science, falls prevention, disability prevention, rehabilitation, ambulatory care	5
Jinjiao	Wang	UT Health San Antonio	home-based care, deprescribing, transitions of care, cognitive impairment, multimorbidity, polypharmacy	1
Stephanie	Zuo	University of Virginia	Long-term care, overactive bladder, urinary tract infections, pelvic floor disorders, implementation science, mixed methods research	5

DataBlitz! - Group 1
Thursday, November 20, 4:30 - 6:00 pm
Moderator: Clair Ankuda
AFAR Staff: Sabrina Isaacs
Room: 11

FIRST:	LAST:	INSTITUTION:	Research Interests
Timothy	Anderson	University of Pittsburgh	hospital medicine, deprescribing, chronic disease management, transitions of care
James	Deardorff	University of California, San Francisco	post-acute care, skilled nursing facility, prognostic modeling
Parag	Goyal	Weill Cornell Medicine	heart failure, polypharmacy, deprescribing
Matthew	Growdon	University of California, San Francisco	Dementia, Prescribing Quality, Deprescribing, Living Arrangements
Miyeon	Jung	Indiana University School of Medicine	Heart failure, heart-brain connection, cognitive dysfunction, mild cognitive impairment, non-pharmacological interventions, virtual
Michael	Nanna	Yale University School of Medicine	Cardiovascular disease, risk stratification, clinical trials, causal inference
Anna	Parks	University of Utah	care of older adults with non-malignant hematologic disease; shared decision-making for older adults with blood diseases; outcomes and
Krishna	Patel	Icahn School of Medicine at Mount Sinai	cardiac imaging, frailty, quality of life, ischemic heart disease
Sachin	Shah	Massachusetts General Hospital/Harvard Medical School	anti-amyloid therapy, anticoagulants, high-risk medications, ADLs, net clinical benefit
Jinjiao	Wang	UT Health San Antonio	home-based care, deprescribing, transitions of care, cognitive impairment, multimorbidity, polypharmacy

DataBlitz! - Group 2
Thursday, November 20, 4:30 - 6:00 pm
Moderator: Lisa Kilpela
AFAR Staff: Elizabeth Pritchett-Montavon
Room: 13

FIRS:	LAST:	INSTITUTION:	Research Interests
Erin	DeMartino	Mayo Clinic Rochester	Ethics, health policy, mixed methods, incarceration
Elizabeth	Dzeng	University of California, San Francisco	palliative care, serious illness care, end-of-life care, institutional cultures and policies, community-engaged research, disparities
Jason	Falvey	University of Maryland School of Medicine	Disability, trauma, hip fracture, neighborhoods, disparities, aging in place, resilience, epidemiology
Cameron	Gettel	Yale University School of Medicine	emergency, care transitions, mHealth, care partner
Felipe	Jain	Harvard Medical School and Massachusetts General Hospital	digital mental health, AI, family caregiving, mentalization, mindfulness
Elissa	Kozlov	Rutgers School of Public Health	mental health, mHealth, AI, palliative care, Medical Aid in Dying
Sarah	Nouri	University of California, San Francisco	serious illness communication, health disparities, digital health
Daniel	Shalev	Weill Cornell Medicine	Palliative care, psychiatry, behavioral health, health services research, serious mental illness, depression, anxiety
Jasmine	Travers Altizer	New York University Rory Meyers College of Nursing	long-term care, disparities, workforce, aging

DataBlitz! - Group 3
Thursday, November 20, 4:30 - 6:00 pm
Moderator: Ricky Shinall
AFAR Staff: Odette van der Willik
Room: 14

FIRST:	LAST:	INSTITUTION:	Research Interests
Courtney	Balentine	University of Wisconsin Madison	Surgery; Implementation science; Causal inference; Clinical trials
Cecilia	Canales	David Geffen School of Medicine, UCLA	frailty, postoperative outcomes especially neurocognitive disorders, underserved elders
Christy	Cauley	Harvard Medical School/Mass General Hospital	Surgery, ostomy, colorectal, communication, intervention development, clinical trials
Sevdenur	Cizginer	Harvard Medical School	geriatric surgery, implementation science, care transition, colorectal surgery, care models, perioperative care
Lindsay	Hampson	University of California, San Francisco	surgery, urology, quality of life, patient decision-making, incontinence, value-based care, decision aid, treatment preferences
Lucia	Madariaga	University of Chicago	thoracic surgery, prehab, frailty, implementation science
Carmen	Quatman	The Ohio State University Wexner Medical Center	Musculoskeletal injury and health, fall prevention, human performance
Katie	Schenning	Oregon Health & Science University	Delirium, Postoperative Neurocognitive Disorders, Anesthesia, Surgery, Frailty, Clinical Trials, Blood-based biomarkers
Carolyn	Seib	Stanford University School of Medicine	primary hyperparathyroidism, geriatric surgery, comparative effectiveness
Victoria	Tang	McGovern Medical School at UTHealth Houston	surgery, mental health, palliative care

DataBlitz! - Group 4
Thursday, November 20, 4:30 - 6:00 pm
Moderator: Andy Teich
Co-Moderator: Guido Falcone
Room: 15

FIRST:	LAST:	INSTITUTION:	Research Interests
Sandra	Aleksic	Einstein College of Medicine	hypothalamus, endocrine, MRI, brain aging, frailty, metabolism
Scott	Bauer	UCSF	geriatric urology, translational geroscience, primary care, frailty, veterans, incontinence
Katherine	Buck	The Ohio State University	emergency medicine, pneumonia, diagnostics
Adam	Faye	NYU Langone Health	Frailty, Sarcopenia, Inflammatory Bowel Disease, Surgical Outcomes
Bharati	Kochar	Massachusetts General Hospital	Frailty, Cognition, Inflammation, Crohn's disease, ulcerative colitis, gastroenterology
Sara	LaHue	University of California, San Francisco	delirium, traumatic brain injury, geroscience, cognitive impairment, bilingualism
Christopher	Mosher	Duke University	COPD, pulmonary rehab, gerotherapeutics, senolytics
Daniel	Roh	Boston University Chobanian & Avedisian School of Medicine	senescence, wound healing, senolytic, tissue repair
Mina	Sedrak	UCLA	Geroscience, Cancer and Aging, Senescence, Senolytics, Clinical Trials

DataBlitz! - Group 5
Thursday, November 20, 4:30 - 6:00 pm
Moderator: Anand Iyer
AFAR Staff: Andrea Sherman
Room: 2, Lobby level

FIRST:	LAST:	INSTITUTION:	Research Interests
Keith	Cole	Vanderbilt University Medical Center	physical therapy, mobility, cognitive impairment, dual-decline, dual-task, instrumental activities of daily living, gait
James	Crick	Ohio State University	Fall prevention, transitions of care, community paramedicine, community re-integration, physical therapy
Meredith	Greene	Indiana University School of Medicine	HIV/AIDS, Geriatric Syndromes, Comprehensive Geriatric Assessment, Models of Care
Matthew	Miller	University of California, San Francisco	Rehabilitation, Cognitive Impairment, Implementation Science, Physical Function
Julia	Scarpa	Weill Cornell Medicine	Anesthesiology, Neurophysiology, Cerebrovascular Dynamics, Cognitive Outcomes, Heart Failure, Aerospace Technology
Sandra	Shi	Harvard Medical School	Patient-centered outcomes after hospitalizations, shared decision-making, frailty
Lisa	Simon	Brigham and Women's Hospital / Harvard Medical School	health services research, econometrics, Medicare, oral health
Jennifer	Vincenzo	University of Arkansas for Medical Sciences	implementation science, falls prevention, disability prevention, rehabilitation, ambulatory care
Stephanie	Zuo	University of Virginia	Long-term care, overactive bladder, urinary tract infections, pelvic floor disorders, implementation science, mixed methods research

DataBlitz! - Group 6
Thursday, November 20, 4:30 - 6:00 pm
Moderator: Vee Phongtankuel
AFAR Staff: Hattie Herman
Room: 3, Lobby level

FIRST:	LAST:	INSTITUTION:	Research Interests
Alison	DeDent	Indiana University	Interstitial lung disease, Chronic lung disease, Access to Care, Collaborative Care Models, Geographic and socioeconomic disparities, Telehealth
Cara	Donohue	Vanderbilt University Medical Center	dysphagia; swallowing; pulmonary function; cough function; post-intensive care syndrome; geriatrics; frailty
Hina	Faisal	Houston Methodist Hospital	Delirium
Lauren	Hunt	University of California, San Francisco	hospice, palliative care, dementia, financialization, Medicare data
Sikandar	Khan	Indiana University School of Medicine	Acute Respiratory Failure, ICU Delirium, Post-Intensive Care Syndrome, ICU-related Cognitive Dysfunction, Post-ICU Cognitive and Physical Aging, Oxidative Stress
Meghan	Mattos	University of Virginia	Alzheimer's disease, digital interventions, mild cognitive impairment, cognitive behavioral therapy, sleep, insomnia, clinical trials
Shannon	McCurdy	University of Pennsylvania	Frailty, Leukemia, Allogeneic Transplantation
Brienne	Miner	Yale University	sleep, aging, dementia, alzheimer's disease
Carolyn	Presley	The Ohio State University	geriatric oncology, functional status, supportive care, mobility, behavioral interventions, models of healthcare delivery
Mfon	Umoh	Johns Hopkins University School of Medicine	Cognitive decline and dementia, Delirium, Health equity and disparities, Health services research

Speed Mentoring
Friday, November 21, 8:00 - 9:00 am, Room 7/8
Assignments by Mentor

Mentors, please sit at the assigned table number. We have scheduled 20 min for each session, but it will be ~17 minutes of discussion, allowing 3 minutes for mentees to move to the next mentor. Please ask the mentee to move at the end of time.

	Claire Ankuda - 1	Cynthia Boyd- 2	Rebecca Brown - 3	Charlie Brown - 4
8:00 - 8:20	Mfon Umoh	Christy Cauley	Jinjiao Wang	Stephanie Zuo
8:20 - 8:40	Katie Schenning	Sandra Aleksic	Hina Faisal	Alison DeDent
8:40 - 9:00	Carmen Quatman	Liz Dzeng	Carolyn Presley	Cara Donohue
	Julie Bynum- 5	Jeffrey Caterino - 6	Harvey Cohen - 7	Ken Covinsky - 8
8:00 - 8:20	Anna Parks	Sevde Cizginer	Sandra Shi	Erin De Martino
8:20 - 8:40	James Crick	Meredith Greene	Courtney Balentine	Jennifer Vincenzo
8:40 - 9:00	Carolyn Seib	Christy Cauley	Keith Cole	James Crick
	Guido Falcone - 9	Lauren Ferrante - 10	Liz Goldberg -11	Parag Goyal - 12
8:00 - 8:20	Sandra Aleksic	Keith Cole	Daniel Shalev	James Deardorff
8:20 - 8:40	Mina Sedrak	Elissa Kozlov	Lauren Hunt	Anna Parks
8:40 - 9:00	James Deardorff	Alison DeDent	Hina Faisal	Jinjiao Wang
	Duke Han - 13	Mac Ishii - 14	Anand Iyer - 15	Felipe Jain - 16
8:00 - 8:20	Chris Mosher	Matthew Growdon	Lauren Hunt	Cameron Gettel
8:20 - 8:40	Cara Donohue	Cameron Gettel	Sarah LaHue	Daniel Shalev
8:40 - 9:00	Vicky Tang	Lindsay Hampson	Matthew Miller	Erin DeMartino
	Lisa Kilpela - 17	Dae Kim - 18	Amy Kind - 19	Sei Lee- 20
8:00 - 8:20	Jennifer Vincenzo	Brienne Miner	Matthew Miller	Krishna Patel
8:20 - 8:40	Lucia Madariaga	Carolyn Seib	Liz Dzeng	Carolyn Presley
8:40 - 9:00	Chris Mosher	Anna Parks	Krishna Patel	Daniel Shalev
	Alison Moore - 21	Vee Phongtankuel - 22	Tony Rosen- 23	Ricky Shinall - 24
8:00 - 8:20	Hina Faisal	Adam Faye	Lindsay Hampson	Sara LaHue
8:20 - 8:40	Sevde Cizginer	Vicky Tang	Jasmine Travers Altizer	Jinjiao Wang
8:40 - 9:00	Sandra Shi	Mfon Umoh	Sachin Shah	Adam Faye
	Al Siu - 25	Mike Steinman - 26	Caroline Stephens - 27	Andy Teich- 28
8:00 - 8:20	Jason Falvey	Katie Schenning	Jasmine Travers Altizer	Courtney Balentine
8:20 - 8:40	James Deardorff	Carmen Quatman	Sachin Shah	Brienne Miner
8:40 - 9:00	Meredith Greene	Stephanie Zuo	Matthew Growdon	Mina Sedrak
	Louise Walter - 29			
8:00 - 8:20	Lucia Madariaga			
8:20 - 8:40	Jason Falvey			
8:40 - 9:00	Elissa Kozlov			

Speed mentoring Session
Friday, November 21, 8:00 - 9:00 am, Room 7/8
Assignments by Mentee

Mentee		8:00-8:20 am	8:20-8:40 am	8:40-9:00 am
Sandra	Aleksic	Guido Falcone - 9	Cynthia Boyd- 2	
Courtney	Balentine	Andy Teich - 28	Harvey Cohen - 7	
Christy	Cauley	Cynthia Boyd - 2		Jeffrey Caterino - 6
Sevde	Cizginer	Jeffrey Caterino - 6	Alison Moore - 21	
Keith	Cole	Lauren Ferrante - 10		Harvey Cohen - 7
James	Crick		Julie Bynum- 5	Ken Covinsky - 8
James	Deardorff	Parag Goyal - 12	Al Siu - 25	Guido Falcone - 9
Alison	DeDent		Charlie Brown - 4	Lauren Ferrante - 10
Erin	DeMartino	Ken Covinsky - 8		Felipe Jain - 16
Cara	Donohue		Duke Han - 13	Charlie Brown - 4
Elizabeth	Dzeng		Amy Kind - 19	Cynthia Boyd- 2
HINA	FAISAL	Alison Moore - 21	Rebecca Brown - 3	Liz Goldberg -11
Jason	Falvey	Al Siu - 25	Louise Walter - 29	
Adam	Faye	Vee Phongtankuel - 22		Richy Shinall - 24
Cameron	Gettel	Felipe Jain - 16	Mac Ishii - 14	
Meredith	Greene		Jeffrey Caterino - 6	Al Siu - 25
Matthew	Growdon	Mac Ishii - 14		Caroline Stephens - 27
Lindsay	Hampson	Tony Rosen - 23		Mac Ishii - 14
Lauren	Hunt	Anand Iyer - 15	Liz Goldberg -11	
Elissa	Kozlov		Lauren Ferrante - 10	Louise Walter - 29
Sara	LaHue	Richy Shinall - 24	Anand Iyer - 15	
Lucia	Madariaga	Louise Walter - 29	Lisa Kilpela - 17	
Matthew	Miller	Amy Kind - 19		Anand Iyer - 15
Brienne	Miner	Dae Kim - 18	Andy Teich - 28	

Speed mentoring Session
Friday, November 21, 8:00 - 9:00 am, Room 7/8
Assignments by Mentee

Mentee		8:00-8:20 am	8:20-8:40 am	8:40-9:00 am
Chris	Mosher	Duke Han - 13		Lisa Kilpela - 17
Anna	Parks	Julie Bynum- 5	Parag Goyal - 12	Dae Kim - 18
Krishna	Patel	Sei Lee - 20		Amy Kind - 19
Carolyn	Presley		Sei Lee - 20	Rebecca Brown - 3
Carmen	Quatman		Mike Steinman - 26	Claire Ankuda - 1
Katie	Schenning	Mike Steinman - 26	Claire Ankuda - 1	
Mina	Sedrak		Guido Falcone - 9	Andy Teich - 28
Carolyn	Seib		Dae Kim - 18	Julie Bynum- 5
Sachin	Shah		Caroline Stephens - 27	Tony Rosen - 23
Daniel	Shalev	Liz Goldberg -11	Felipe Jain - 16	Sei Lee - 20
Sandra	Shi	Harvey Cohen - 7		Alison Moore - 21
Vicky	Tang		Vee Phongtankuel - 22	Duke Han - 13
Jasmine	Travers Altizer	Caroline Stephens - 27	Tony Rosen - 23	
Mfon	Umoh	Claire Ankuda - 1		Vee Phongtankuel - 22
Jennifer	Vincenzo	Lisa Kilpela - 17	Ken Covinsky - 8	
Jinjiao	Wang	Rebecca Brown - 3	Richy Shinall - 24	Parag Goyal - 12
Stephanie	Zuo	Charlie Brown - 4		Mike Steinman - 26



american federation
for aging research

2025

**The Paul B. Beeson
Emerging Leaders
Career Development Award
in Aging (K76)
Scholars**



Cecilia Canales, MD

Assistant Professor, University of California, Los Angeles
Improving Postsurgical Cognitive Outcomes in Limited English Proficient Older Adults with a Perioperative Care Partner Program: A Pilot Pragmatic Randomized Controlled Trial

Keith Cole, PT, PhD, DPT

Assistant Professor, Vanderbilt University
Medical Center
The Proteomic Signature of Dual Decline in Gait and Cognition





W. James Deardorff, MD

Assistant Professor, University of California, San Francisco

*Enhancing prognosis communication for older adults in skilled nursing facilities
(2023 GEMSSTAR)*

Hina Faisal, MD

Assistant Professor, Houston Methodist Hospital
*Virtual Reality-Based Cognitive Stimulation Games for Enhancing Attention and Preventing Delirium in Older Surgical Patients with Cognitive Impairment: A Randomized Controlled Pilot Trial
(2022 GEMSSTAR)*





Cameron Gettel, MD, MHS

Assistant Professor, Yale University School of Medicine

*Development and pilot testing of a novel text messaging intervention to improve emergency department care transitions among care partners of persons living with cognitive impairment
(2021 GEMSSTAR)*

Maria Lucia Madariaga, MD

Associate Professor, University of Chicago

*BeFitMe II: Applying User-Centered Co-Design and Implementation Science to Enhance Prehabilitation for Frail Older Adults Undergoing Lung Cancer Surgery
(2023 GEMSSTAR)*





Shannon McCurdy, MD

Assistant Professor, University of Pennsylvania

The Impact of Frailty on Disease Relapse and Therapy Intensity in Older Adults with Acute Myeloid Leukemia: Biomarkers and Treatment Selection

(2022 GEMSSTAR)

Christopher Mosher, MHS, MD

Assistant Professor of Medicine, Duke University

Investigating Senolytic Properties in Pulmonary Rehabilitation and Metformin in COPD Exacerbations (INSPIRE-COPD-E).

(2023 GEMSSTAR)





Krishna Patel, MD

Assistant Professor, Icahn School of Medicine at Mount Sinai

*Opportunistic use of existing chest CT data for frailty screening
(2023 GEMSSTAR)*

Sandra Shi, MD, MPH

Instructor of Medicine, Harvard Medical School

*Strengthening Recovery - Integrating Intrinsic Capacity Care into Post-Acute Skilled Nursing Facilities
(2022 GEMSSTAR)*





Lisa Simon, MD, DMD

Assistant Professor, Brigham and Women's Hospital /
Harvard Medical School

*Evaluating the effect of a new Medicare dental benefit on the health of
older adults*

| 2025 BEESON TRAVEL AWARDEES |

James Crick, DPT, PhD

Postdoctoral Scholar, The Ohio State University

Alison DeDent, MD, MAS

Assistant Professor of Medicine, Indiana University

Cara Donohue, PhD CCC-SLP

Assistant Professor, Vanderbilt University Medical Center

Julia Scarpa, MS, MD, PhD

Assistant Professor of Anesthesiology, Weill Cornell Medicine

Mfon Umoh, MD, PhD

Assistant Professor, Johns Hopkins University

Stephanie Zuo, MD, MS

Assistant Professor, University of Virginia

**2025 Clin-STAR and Beeson Meetings
Contact List**

FIRST:	LAST:	INSTITUTION:	ROLE	E-MAIL:	research interest key words
Peter	Abadir	Johns Hopkins University School of Medicine	Clin-STAR Speaker	pabadir1@jhmi.edu	Frailty, Artificial Intelligence, Resilience, Molecular Mechanisms of Aging
Sandra	Aleksic	Einstein College of Medicine	Beeson Scholar	sandra.aleksic@einsteinmed.edu	hypothalamus, endocrine, MRI, brain aging, frailty, metabolism
Timothy	Anderson	University of Pittsburgh	Beeson Scholar	tsander@pitt.edu	hospital medicine, deprescribing, chronic disease management, transitions of care
Claire	Ankuda	Icahn School of Medicine at Mount Sinai	Clin-STAR Speaker; Graduating Beeson Scholar	claire.ankuda@mssm.edu	Medicare, hospice, end-of-life care, Medicare Advantage, serious illness
Andrew	Artz	City of Hope	Clin-STAR Research Core	aartz@coh.org	Hematology; Stem Cell transplant; Toxicity; Leukemia; Anemia; MDS; Prognostic; Models
Nikita	Baclig	University of California, Los Angeles	Clin-STAR Travel Awardee	nbaclig@mednet.ucla.edu	Bladder Cancer, Physical Function, Frailty
Alexis	Bakos	National Institute on Aging	NIA; Clin-STAR Program Officer	alexis.bakos@nih.gov	Palliative Care, Delirium, Incontinence/Pelvic Disorders, Wound Healing/Skin Ulcer Prevention, Oncology, Emergency Medicine, Dysphagia/Oral Health
Courtney	Balentine	University of Wisconsin Madison	Beeson Scholar	cbalentine@wisc.edu	Surgery; Implementation science; Causal inference; Clinical trials
Scott	Bauer	University of California, San Francisco	Clin-STAR Speaker; Beeson Scholar	Scott.Bauer@ucsf.edu	incontinence, lower urinary tract symptoms, geriatric syndromes, frailty, epidemiology, geroscience
Malaz	Boustani	Indiana Univ. Sch. of Med./Regenstrief Inst., Inc.	Clin-STAR Research Core; Beeson Alumni	mboustan@iu.edu	Agile Science and its derivatives; Dementia, Delirium, Mild Cognitive Impairment
Cynthia	Boyd	Johns Hopkins University School of Medicine	Clin-STAR Research Core; Alumni Beeson	cyboyd@jhmi.edu	multimorbidity, deprescribing, person centered care
Rebecca	Brown	University of Pennsylvania	Alumni Beeson Scholar	rebecca.brown@penmedicine.upenn.edu	Functional status, Housing, Housing-based interventions, Aging in place, Implementation science
Charles	Brown	Stanford University	Alumni Beeson Scholar	chbrown@stanford.edu	Delirium, cognitive decline, anesthesia, surgery, frailty
Katherine	Buck	The Ohio State University	Beeson Scholar	Katherine.Buck@osumc.edu	emergency medicine, pneumonia, diagnostics
Julie	Bynum	University of Michigan	Alumni Beeson Scholar	bynumju@med.umich.edu	alzheimer's disease and related dementias; healthcare utilization

*EAC: External Advisory Committee

**2025 Clin-STAR and Beeson Meetings
Contact List**

FIRST:	LAST:	INSTITUTION:	ROLE	E-MAIL:	research interest key words
Cecilia	Canales	David Geffen School of Medicine, UCLA	Beeson Scholar	ceciliacanales@mednet.ucla.edu	frailty, postoperative outcomes especially neurocognitive disorders, underserved elders
Anne	Cappola	University of Pennsylvania	Clin-STAR	acappola@penmedicine.upenn.edu	Endocrinology, clinical research, medical communication
Christopher	Carpenter	Mayo Clinic-Rochester	Clin-STAR Leadership Core	carpenter.christopher@mayo.edu	implementation science; diagnostic; clinical practice guideline; learning health system science
Ashley	Carson	Center for Hope and Safety	Beeson speaker	ashley@hopeandsafety.org	
Christy	Carter	NIA/NIH	NIA	christy.carter@nih.gov	
Martin	Casey	University of North Carolina School of Medicine	GEMSSTAR	martin_casey@med.unc.edu	Deprescribing, emergency medicine
Jeffrey	Caterino	The Ohio State University	Alumni Beeson Scholar	Jeffrey.Caterino@osumc.edu	diagnostics, emergency, UTI
Christy	Cauley	Harvard Medical School/Mass General Hospital	Beeson Scholar	ccauley@mgb.org	Surgery, ostomy, colorectal, communication, intervention development, clinical trials
Sevdenur	Cizginer	Harvard Medical School	Beeson Scholar	scizginer1@mgh.harvard.edu	geriatric surgery, implementation science, care transition, colorectal surgery, care models, perioperative care
Harvey	Cohen	Center For The Study Of Aging	AFAR Board; Clin-STAR Mentorship Core	Harvey.cohen@duke.edu	Cancer & Aging, Resilience, Functional Decline, Inflammation
Jesse	Cohen	University of Florida - Jacksonville	Clin-STAR Travel Awardee	jesse.cohen@jax.ufl.edu	Sleep, circadian rhythms, gait, Neurodegenerative disease
Keith	Cole	Vanderbilt University Medical Center	Beeson Scholar	keith.cole@vumc.org	mobility, gait, cognition, dual-decline, proteomics
Angela	Collins	The Ohio State University	GEMSSTAR	angela.collins@osumc.edu	Fracture healing, Geriatric fractures, bone healing, macrophage polarization, inflammaging
Kenneth	Covinsky	Univ. of California, San Francisco School of Medicine	Clin-STAR Speaker; Alumni Beeson	covinsky@medicine.ucsf.edu	Disability, prognosis, quality of life, dementia, palliative care
James	Crick	The Ohio State University	Beeson Travel Awardee	james.crick@osumc.edu	Fall prevention, transitions of care, community paramedicine, community re-integration, physical therapy
Carine	Davila	Harvard University	GEMSSTAR	cdavila@mgh.harvard.edu	healthcare disparities, language discordance, Spanish-speaking patients, qualitative methods, intervention design

*EAC: External Advisory Committee

**2025 Clin-STAR and Beeson Meetings
Contact List**

FIRST:	LAST:	INSTITUTION:	ROLE	E-MAIL:	research interest key words
James	Deardorff	University of California, San Francisco	Beeson Scholar	William.Deardorff@ucsf.edu	post-acute care, skilled nursing facility, prognostic modeling
Alison	DeDent	Indiana University	Beeson Travel Awardee	adedent@iu.edu	Health services research, implementation science, rural health, interstitial lung disease, advanced lung disease, collaborative care models, telehealth
Erin	DeMartino	Mayo Clinic Rochester	Beeson Scholar	DeMartino.Erin@mayo.edu	Ethics, health policy, mixed methods, incarceration
Cara	Donohue	Vanderbilt University Medical Center	Beeson Travel Awardee	cara.donohue@vumc.org	Dysphagia; swallowing; pulmonary function; cough function; post-intensive care syndrome; frailty
Elizabeth	Dzeng	University of California, San Francisco	Beeson Scholar	liz.dzeng@ucsf.edu	palliative care, serious illness care, end-of-life care, institutional cultures and policies, human centered design, community-engaged research, disparities
Sara	Espinoza	Cedars-Sinai Medical Center	CS Leadership; Beeson Committee; AFAR Bd	sara.espinoza@cshs.org	translational geroscience, clinical trials, frailty
Julie	Faieta	University of Pittsburgh	Clin-STAR Travel Awardee	juf52@pitt.edu	Technology for Aging; Dementia Caregivers; Non-Pharmacological; Alzheimer's disease and related dementias
Hina	Faisal	Houston Methodist Hospital	Beeson Scholar	hfaisal@houstonmethodist.org	Delirium
Guido	Falcone	Yale School of Medicine	Graduating Beeson Scholar	guido.falcone@yale.edu	Cerebrovascular disease; Brain health; Genetics and genomics; Clinical epidemiology
Jason	Falvey	University of Maryland School of Medicine	Beeson Scholar	JFalvey@som.umaryland.edu	Disability, trauma, hip fracture, neighborhoods, disparities, aging in place, resilience, epidemiology
Adam	Faye	NYU Langone Health	Beeson Scholar	adam.faye@nyulangone.org	Frailty, Sarcopenia, Inflammatory Bowel Disease, Surgical Outcomes
Elena	Fazio	NIA	NIA	elena.fazio@nih.gov	
Lauren	Ferrante	Yale School of Medicine	Alumni Beeson Scholar	lauren.ferrante@yale.edu	functional outcomes; intensive care unit (ICU)/critical care; disability; delirium; social isolation
Natalia	Festa	Yale School of Medicine	GEMSSTAR	natalia.festa@yale.edu	Long-term care staffing, regulation, dementia
Daniel	Forman	University of Pittsburgh	Clin-STAR Mentorship Core	formand@pitt.edu	Cardiology, Frailty, Geroscience, Exercise, Cardiac Rehabilitation, Veterans Administration

*EAC: External Advisory Committee

**2025 Clin-STAR and Beeson Meetings
Contact List**

FIRST:	LAST:	INSTITUTION:	ROLE	E-MAIL:	research interest key words
Cameron	Gettel	Yale University School of Medicine	Beeson Scholar	cameron.gettel@yale.edu	emergency, care transitions, mHealth, care partner
Thomas	Gill	Yale School of Medicine	Clin-STAR PI; Beeson PI	thomas.gill@yale.edu	Epidemiology of disability and aging, functional assessment, clinical trials, program leadership
Dana	Giza	UT Health Houston	GEMSSTAR	dana.e.giza@uth.tmc.edu	cancer survivorship, priorities for survivorship care
Elizabeth	Goldberg	University of Colorado	Clin-STAR Speaker; Graduating Beeson Scholar	elizabeth.goldberg@cuanschutz.edu	fall prevention, digital health, emergency medicine, clinical trials, qualitative research
Candida	Goodnough	Stanford University	GEMSSTAR	didigood@stanford.edu	Postoperative Delirium, Cognitive Recovery after Anesthesia, Aldehydes
Parag	Goyal	Weill Cornell Medicine	Beeson Scholar	pag9051@med.cornell.edu	heart failure, polypharmacy, deprescribing
Meredith	Greene	Indiana University School of Medicine	Beeson Scholar	mlgreene@iu.edu	HIV/AIDS, Geriatric Syndromes, Comprehensive Geriatric Assessment, Models of Care
Matthew	Growdon	University of California, San Francisco	Beeson Scholar	matthew.growdon@ucsf.edu	Dementia, Prescribing Quality, Deprescribing, Living Arrangements
Todd	Haim	NIH/NIA	NIA; Clin-STAR Speaker	todd.haim@nih.gov	
Rasheeda	Hall	Duke University Medical Center	Clin-STAR Research Core; Beeson Alumni	rasheeda.stephens@duke.edu	geriatric nephrology, deprescribing, health services research
Lindsay	Hampson	University of California, San Francisco	Beeson Scholar	lindsay.hampson@ucsf.edu	surgery, urology, quality of life, patient decision-making, incontinence, value-based care, decision aid, treatment preferences
S. Duke	Han	University of Southern California	Alumni Beeson Scholar	dukehan@usc.edu	cognition, Alzheimer's, dementia, decision making
Claire	Han	The Ohio State University	Clin-STAR Awardee	han.1985@osu.edu	AI clinical decision model, chemotoxicity, older adults with cancer, onco-geriatrics, biological aging, geospatial disparities
Hattie	Herman	AFAR	AFAR Staff	hattie@afar.org	
Matthew	Hoffman	University of Iowa	GEMSSTAR	matthew-r-hoffman@uiowa.edu	Voice, swallow, aging, larynx, communication, loneliness, social interaction
Lauren	Hunt	University of California, San Francisco	Beeson Scholar	Lauren.Hunt@ucsf.edu	hospice, palliative care, dementia, financialization, Medicare data

*EAC: External Advisory Committee

**2025 Clin-STAR and Beeson Meetings
Contact List**

FIRST:	LAST:	INSTITUTION:	ROLE	E-MAIL:	research interest key words
Sharon	Inouye	Harvard Medical School	Clin-STAR EAC	sharoninouye@hsl.harvard.edu	delirium and functional decline in hospitalized older patients
Sabrina	Isaacs	American Federation for Aging Research	AFAR Staff	sabrina@afar.org	
Makoto	Ishii	UT Southwestern Medical Center	Alumni Beeson Scholar	Makoto.Ishii@UTSouthwestern.edu	Alzheimer's disease, hypothalamus, metabolism, mouse models, biomarkers
Anand	Iyer	University of Alabama at Birmingham	Graduating Beeson Scholar	aiyer@uabmc.edu	PalliPulm, GeriPulm, implementation science, intervention development, palliative care, geriatrics, COPD, serious respiratory illness
Felipe	Jain	Harvard Medical School and MGH	Beeson Scholar	felipe.jain@mgh.harvard.edu	digital mental health, AI, family caregiving, mentalization, mindfulness
Angela	Jefferson	Vanderbilt University Medical Center	Clin-STAR EAC; Beeson Committee	angela.jefferson@vumc.org	AD, dementia, cardiovascular, neurology, neuropsychology, cognitive impairment, cerebral small vessel disease
Jingran	Ji Ji	University of California, Los Angeles	GEMSSTAR	jingranji@mednet.ucla.edu	Cancer and aging, geriatric oncology, GI oncology, physical function, cellular senescence
Cali	Johnson	University of Utah	GEMSSTAR	Cali.Johnson@hsc.utah.edu	Cognition, PROMs, HRQOL
Lyndon	Joseph	NIA	NIA	lyndon.joseph@nih.gov	
Miyeon	Jung	Indiana University School of Medicine	Beeson Scholar	miyjung@iu.edu	Heart failure, heart-brain connection, cognitive dysfunction, MCI, non-pharmacological interventions, virtual reality, clinical trials
Shoshana	Kahana	National Institute on Aging, NIH	NIA	shoshana.kahana@nih.gov	
Mark	Katlic	LifeBridge Health System, Baltimore	Clin-STAR EAC	mrkatlic@msn.com	Geriatric Surgery; Perioperative
Sikandar	Khan	Indiana University School of Medicine	Beeson Scholar	sikhan@iu.edu	Acute Respiratory Failure, ICU Delirium, Post-Intensive Care Syndrome, ICU-related Cognitive Dysfunction, Post-ICU Cognitive and Physical Aging, Oxidative Stress
Lisa	Kilpela	UT Health San Antonio	Graduating Beeson Scholar	kilpela@uthscsa.edu	women's health, mental health, community-engaged research, nutrition, food insecurity
Theresa	Kim	NIH/NIA	NIA; Clin-STAR Speaker	theresa.kim@nih.gov	health systems research, clinical trials, statistics and data science

*EAC: External Advisory Committee

2025 Clin-STAR and Beeson Meetings

Contact List

FIRST:	LAST:	INSTITUTION:	ROLE	E-MAIL:	research interest key words
Dae Hyun	Kim	Hebrew SeniorLife Marcus Institute/Harvard Medical School	Alumni Beeson Scholar	dhk000@mail.harvard.edu	Frailty, geriatric pharmacoepidemiology, administrative data, preoperative assessment
Amy Jo	Kind	University of Wisconsin-Madison	Beeson speaker; Beeson Alumni Scholar	amy.kind@wisc.edu	Health Disparities, Social Exposome, Alzheimer's Disease, Area Deprivation Index, (ADI) and Neighborhood Atlas, Implementation Science
Bharati	Kochar	Massachusetts General Hospital	Beeson Scholar	bkochar@mgh.harvard.edu	Frailty, Cognition, Inflammation, Crohn's disease, ulcerative colitis, gastroenterology
Elissa	Kozlov	Rutgers School of Public Health	Beeson Scholar	Elissa.Kozlov@rutgers.edu	mental health, mHealth, AI, palliative care, Medical Aid in Dying
Alina	Kung	Icahn School of Medicine at Mount Sinai	GEMSSTAR	alina.kung@mssm.edu	older adults, serious illness, out-of-pocket costs, burdensome care
Mark	Lachs	Weill Cornell Medicine	Alumni Beeson Scholar, AFAR Board	msslachs@med.cornell.edu	elder abuse and neglect, measurement of functional status, ethics and the financing of healthcare
Sara	LaHue	University of California, San Francisco	Beeson Scholar	Sara.Lahue@ucsf.edu	delirium, traumatic brain injury, geroscience, cognitive impairment, bilingualism
Allison	Lange	University of Colorado Anschutz Medical Campus	GEMSSTAR	allison.lange@cuanschutz.edu	palliative care, chronic lung disease, COPD, serious illness communication
Thomas	Laskow	Johns Hopkins University	GEMSSTAR	tlaskow1@jhmi.edu	Resilience, Immunity, Inflammation
Rebecca	Lassell	Indiana University Bloomington	Clin-STAR Award alumni	blassel@iu.edu	Alzheimer disease, physical activity, function, lifestyle medicine
Jacob	Lebin	University of Colorado	Clin-STAR Travel Awardee	jacob.lebin@cuanschutz.edu	emergency medicine, substance use disorders, clinical decision support
David	Lee	University of California, Los Angeles	Clin-STAR Travel Awardee	drlee@mednet.ucla.edu	Comprehensive Dementia Care, Dementia care management, Dementia care quality, Care coordination, Community engagement
Jay	Lee	Duke University	GEMSSTAR	jay.lee@duke.edu	Health services research, shared decision-making
Sei	Lee	University of California, San Francisco	Alumni Beeson Scholar	sei.lee@ucsf.edu	Prediction, Prevention, Diabetes, Nursing Home
Kathleen	Li	University of Washington	GEMSSTAR	kathyli@uw.edu	emergency department, older adults, interfacility transfer, health services research
Brian	Lindberg	Healthsperien	Beeson speaker	blindberg@healthsperien.com	

*EAC: External Advisory Committee

**2025 Clin-STAR and Beeson Meetings
Contact List**

FIRST:	LAST:	INSTITUTION:	ROLE	E-MAIL:	research interest key words
Heidi	Lindroth	Mayo Clinic	Clin-STAR Award alumni	lindroth.heidi@mayo.edu	Delirium, aging, critical care, Artificial Intelligence, Agile Science
Nancy	Lundebjerg	American Geriatrics Society	Clin-STAR EAC	nlundebjerg@americangeriatrics.org	leadership, grantsmanship, networking, working with specialty societies, collaborating with other specialties
Maria Lucia	Madariaga	University of Chicago	Beeson Scholar	mlmadariaga@uchicago.edu	thoracic surgery, prehab, frailty, implementation science
Laura	Major	NIA/NIH	NIA; Clin-STAR Scientific Advisor	laura.major@nih.gov	
Daniel	Matlock	University of Colorado Denver	Alumni Beeson Committee	daniel.matlock@ucdenver.edu	Implementation science. Patient centered care. Shared decision Making.
Meghan	Mattos	University of Virginia	Beeson Scholar	ms2bv@virginia.edu	Alzheimer's disease, digital interventions, mild cognitive impairment, cognitive behavioral therapy, sleep, insomnia, clinical trials
Donovan	Maust	University of Michigan	Alumni Beeson Committee	maustd@umich.edu	psychotropic, dementia, workforce, survey, Medicare, VA
Shannon	McCurdy	University of Pennsylvania	Beeson Scholar	shannon.mccurdy@penmedicine.upenn.edu	Frailty, Leukemia, Allogeneic Transplantation
Matthew	Miller	University of California, San Francisco	Beeson Scholar	Matthew.Miller4@ucsf.edu	Rehabilitation, Cognitive Impairment, Implementation Science, Physical Function
Brienne	Miner	Yale University	Beeson Scholar	brienne.miner@yale.edu	sleep, aging, dementia, alzheimer's disease
Lisa	Mistler	Geisel School of Medicine at Dartmouth	GEMSSTAR	lisa.a.mistler@hitchcock.org	dementia, Alzheimer's Disease/Alzheimer's Disease and Related Dementias, caregivers/care partners, mental health
Lona	Mody	University of Michigan/VAMC GRECC	Clin-STAR Leadership Core	lonamody@umich.edu	Infections in older adults, Transmission of pathogens in healthcare settings, Impact of infections on function
Alison	Moore	University of California, San Diego	Clin-STAR Mentorship Core; Alumni Beeson	alm123@health.ucsd.edu	healthy aging, alcohol, cannabis, substance use, health disparities
Brianna	Morgan	NYU Grossman School of Medicine	Clin-STAR Awardee	brianna.morgan@nyulangone.org	dementia, geriatrics, palliative care, psychosocial support
Christopher	Mosher	Duke University	Beeson Scholar	christopher.mosher@duke.edu	COPD, pulmonary rehab, gerotherapeutics, senolytics
Michael	Nanna	Yale University School of Medicine	Clin-STAR Speaker; Beeson Scholar	michael.nanna@yale.edu	Cardiovascular disease, risk stratification, clinical trials, causal inference

*EAC: External Advisory Committee

**2025 Clin-STAR and Beeson Meetings
Contact List**

FIRST:	LAST:	INSTITUTION:	ROLE	E-MAIL:	research interest key words
Sarah	Nouri	University of California, San Francisco	Beeson Scholar	Sarah.Nouri@ucsf.edu	serious illness communication, health disparities, digital health
Ariela	Orkaby	Brigham and Women's Hospital/Harvard Medical School	Clin-STAR Speaker	aorkaby@bwh.harvard.edu	preventive cardiology and frailty
Allyson	Palmer	Mayo Clinic	Clin-STAR Travel Awardee	palmer.allyson@mayo.edu	delirium, cellular senescence, geroscience
Chan Mi	Park	Hebrew SeniorLife, Harvard Medical School	GEMSSTAR	chanmipark@hsl.harvard.edu	pharmacoepidemiology, post-acute care
Anna	Parks	University of Utah	Beeson Scholar	anna.parks@hsc.utah.edu	care of older adults with non-malignant hematologic disease; shared decision-making for older adults with blood diseases; outcomes and aging-centered outcomes
Krishna	Patel	Icahn School of Medicine at Mount Sinai	Beeson Scholar	Krishna.Patel5@mountsinai.org	cardiac imaging, frailty, quality of life, ischemic heart disease
Henry	Paulson	University of Michigan	Alumni Beeson Scholar	henryp@umich.edu	neurodegenerative diseases, basic and translational studies
Juliessa	Pavon	Duke University	Clin-STAR Speaker	juliessa.pavon@duke.edu	Hospital acute care of older adults, Deprescribing, Mobility/Functional Outcomes/Falls, Clinical Informatics, AI, Wearables, Digital Health, Data Science
Anthony	Peters	Wake Forest University School of Medicine	Clin-STAR Awardee	anthony.peters@advocatehealth.org	Heart failure with preserved ejection fraction; Exercise interventions; Clinical trial design; Molecular profiling
Veerawat	Phongtankuel	Weill Cornell Medicine	Graduating Beeson Scholar	vep9012@med.cornell.edu	Caregiving, hospice, palliative care, symptom burden
Gabriela	Poles	University of Rochester	GEMSSTAR	gabriela_poles@urmc.rochester.edu	Shared decision making, surgery, frailty
Lauren	Pollack	University of Washington	CS Travel Awardee	lrp2@uw.edu	end-of-life care, communication, critical illness, emergency care
Carolyn	Presley	The Ohio State University	Beeson Scholar	carolyn.presley@osumc.edu	geriatric oncology, functional status, supportive care, mobility, behavioral interventions, models of healthcare delivery
Suzanne	Prevost	University of Alabama at Birmingham	Clin-STAR EAC	sprevost@ua.edu	Nursing, Educational Leadership, Palliative Care
Elizabeth	Pritchett-Montavon	AFAR	AFAR Staff	elizabeth@afar.org	

*EAC: External Advisory Committee

2025 Clin-STAR and Beeson Meetings

Contact List

FIRST:	LAST:	INSTITUTION:	ROLE	E-MAIL:	research interest key words
Carmen	Quatman	The Ohio State University Wexner Medical Center	Beeson Scholar; Clin-STAR Speaker	carmen.quatman@osumc.edu	Musculoskeletal injury and health, fall prevention, human performance
Luci	Roberts	National Institute on Aging	NIA	roberlu@mail.nih.gov	
Rebecca	Rodin	Icahn School of Medicine at Mount Sinai	GEMSSTAR	rebecca.rodin@mssm.edu	pain, opioids, dementia, palliative care
Nicole	Rogus-Pulia	University of Wisconsin- Madison	Graduating Beeson Scholar	npulia@wisc.edu	Speech-language pathology, rehabilitation, dysphagia, swallowing, aging, frailty, oral health, saliva bioscience, clinical trials
Daniel	Roh	Boston University Chobanian & Avedisian School of Medicine	Beeson Scholar	droh@bu.edu	senescence, wound healing, senolytic, tissue repair
Karen	Rose	The Ohio State University	Clin-STAR Research Core	rose.1482@osu.edu	dementia; caregiving; nursing
Anthony	Rosen	Weill Cornell Medical College	Alumni Beeson Scholar	aer2006@med.cornell.edu	elder abuse; elder mistreatment; geriatric emergency medicine; geriatric prehospital care
Jason	Ross	Stanford University	Clin-STAR Awardee	rossj@stanford.edu	relationship between aging and cancer
Marcel	Salive	National Institute on Aging	NIA	marcel.salive@nih.gov	
Vivek	Sant	University of Texas Southwestern Medical Center	GEMSSTAR	Vivek.Sant@utsouthwestern.edu	hyperparathyroidism, predictive models, machine learning, surgical decision making
Sebastian	Sattui	University of Pittsburgh School of Medicine	GEMSSTAR	ssattui@pitt.edu	rheumatic diseases, polymyalgia rheumatica, frailty
Joseph	Scarpa	Weill Cornell Medicine	GEMSSTAR	jos9335@med.cornell.edu	biological aging, machine learning, genomics, surgery
Julia	Scarpa	Weill Cornell Medicine	Beeson Travel Awardee	jus9143@med.cornell.edu	Postoperative Outcomes, Perioperative Physiology, Medical Technology, Neurocognitive Outcomes, Heart Failure
Danielle	Scharp	Icahn School of Medicine at Mount Sinai	Clin-STAR Travel Awardee	danielle.scharp@mountsinai.org	urinary incontinence, nursing informatics, natural language processing, biopsychosocial determinants, intervention co-design
Katie	Schenning	Oregon Health & Science University	Beeson Scholar	malcore@ohsu.edu	Delirium, Postoperative Neurocognitive Disorders, Anesthesia, Surgery, Frailty, Clinical Trials, Blood-based biomarkers

*EAC: External Advisory Committee

**2025 Clin-STAR and Beeson Meetings
Contact List**

FIRST:	LAST:	INSTITUTION:	ROLE	E-MAIL:	research interest key words
Mina	Sedrak	UCLA	Beeson Scholar	MSedrak@mednet.ucla.edu	Geroscience, Cancer and Aging, Senescence, Senolytics, Clinical Trials
Carolyn	Seib	Stanford University School of Medicine	Beeson Scholar	cseib@stanford.edu	primary hyperparathyroidism, geriatric surgery, comparative effectiveness
Monica	Serra	NIA/NIH	NIA	monica.serra@nih.gov	
Manish	Shah	University of Wisconsin School of Medicine & Public Health	Clin-STAR EAC; Alumni Beeson Committee	mshah@medicine.wisc.edu	geriatrics, emergency medicine, dementia, prehospital medicine
Sachin	Shah	Massachusetts General Hospital/Harvard Medical School	Beeson Scholar	sshah@mgh.harvard.edu	anti-amyloid therapy, anticoagulants, high-risk medications, ADLs, net clinical benefit
Daniel	Shalev	Weill Cornell Medicine	Beeson Scholar	das2043@med.cornell.edu	Palliative care, psychiatry, behavioral health, health services research, serious mental illness, depression, anxiety
Ned	Sharpless	Jupiter Bio	Beeson speaker; Alumni Beeson Scholar	norman_sharpless@med.unc.edu	Cancer and aging
Andrea	Sherman	AFAR	AFAR Staff	andrea@afar.org	
Sandra	Shi	Harvard Medical School	Beeson Scholar	ssh@alumni.harvard.edu	Patient-centered outcomes after hospitalizations, shared decision-making, frailty
Bianca	Shieu	The University of Texas at San Antonio	Clin-STAR Travel Awardee	shieu@uthscsa.edu	chronic pain management, caregiver and PLWD, auricular acupressure, community and long-term care settings
Myrick	Shinall	Vanderbilt University Medical Center	Graduating Beeson Scholar	ricky.shinall@vumc.org	
Aditya	Shirali	University of Florida College of Medicine	GEMSTAR	aditya.shirali@surgery.ufl.edu	cellular senescence, thyroid, inflammation, malignancy
Lisa	Simon	Brigham and Women's Hospital / Harvard Medical School	Beeson Scholar	lsimon@bwh.harvard.edu	health services research, econometrics, Medicare, oral health
Albert	Siu	Icahn School of Medicine at Mount Sinai	Beeson speaker	Albert.Siu@mssm.edu	
Alexander	Smith	University of California, San Francisco	Alumni Beeson Committee	alexander.smith@ucsf.edu	GeriPal podcast, ePrognosis, JAGS
Michael	Steinman	University of California, San Francisco School of Medicine	Alumni Beeson Scholar	mike.steinman@ucsf.edu	polypharmacy, deprescribing, pharmacoepidemiology, veterans, multimorbidity

*EAC: External Advisory Committee

**2025 Clin-STAR and Beeson Meetings
Contact List**

FIRST:	LAST:	INSTITUTION:	ROLE	E-MAIL:	research interest key words
Caroline	Stephens	University of Utah College of Nursing	Alumni Beeson Scholar	caroline.stephens@nurs.utah.edu	palliative care, nursing homes, family caregivers, telehealth
Victoria	Tang	McGovern Medical School at UTHealth Houston	Beeson Scholar	victoria.tang@uth.tmc.edu	surgery, mental health, palliative care
Andrew	Teich	Columbia University	Alumni Beeson scholar	aft25@cumc.columbia.edu	Alzheimer's disease, neuropathology, immune response, brain banking
Roland	Thorpe, Jr.	Johns Hopkins School of Public Health	Clin-STAR SIG Advisor	rthorpe@jhu.edu	Health disparities, health equity, minority aging, and Black men
Delany	Torres	NIA	NIA	delany.torressalazar@nih.gov	
Arissa	Torrie	University of Maryland	GEMSTAR	atorrie@som.umaryland.edu	regional anesthesia; perioperative; clinical outcomes; pain management
Jasmine	Travers Altizer	New York University Rory Meyers College of Nursing	Beeson Scholar	jt129@nyu.edu	long-term care, disparities, workforce, aging
Mfon	Umoh	Johns Hopkins University school of Medicine	Beeson Travel Awardee	mumoh3@jhmi.edu	Cognitive impairment, dementia, modifiable, risk factors, delirium, social connections, biomarkers
Kathleen	Unroe	Indiana University School of Medicine	Alumni Beeson Committee	kunroe@iu.edu	long term care, palliative care, health policy
Odette	Van Der Willik	American Federation for Aging Research	AFAR Staff	odette@afar.org	
Jennifer	Vincenzo	University of Arkansas for Medical Sciences	Beeson Scholar	jlvincenzo@uams.edu	implementation science, falls prevention, disability prevention, rehabilitation, ambulatory care
Elena	Volpi	Barshop Institute for Longevity and Aging Studies, UT San Antonio	Clin-STAR Research Core	volpi@uthscsa.edu	Translational geroscience, Sarcopenia, Physical function, Functional recovery, Pepper Center
Louise	Walter	UCSF	Clin-STAR Leadership Core	louise.walter@ucsf.edu	Cancer Screening, Prognostication, Individualized Decision Making
Jinjiao	Wang	UT Health San Antonio	Beeson Scholar	wangj17@uthscsa.edu	home-based care, deprescribing, transitions of care, cognitive impairment, multimorbidity, polypharmacy
Charlotte	Weiss	University of North Carolina Wilmington	Clin-STAR Travel Awardee	weissc@uncw.edu	Dementia, caregivers, arts-based methods and innovations, palliative care
David	White	The Light Collective	Clin-STAR Speaker	davidmwhite@aya.yale.edu	

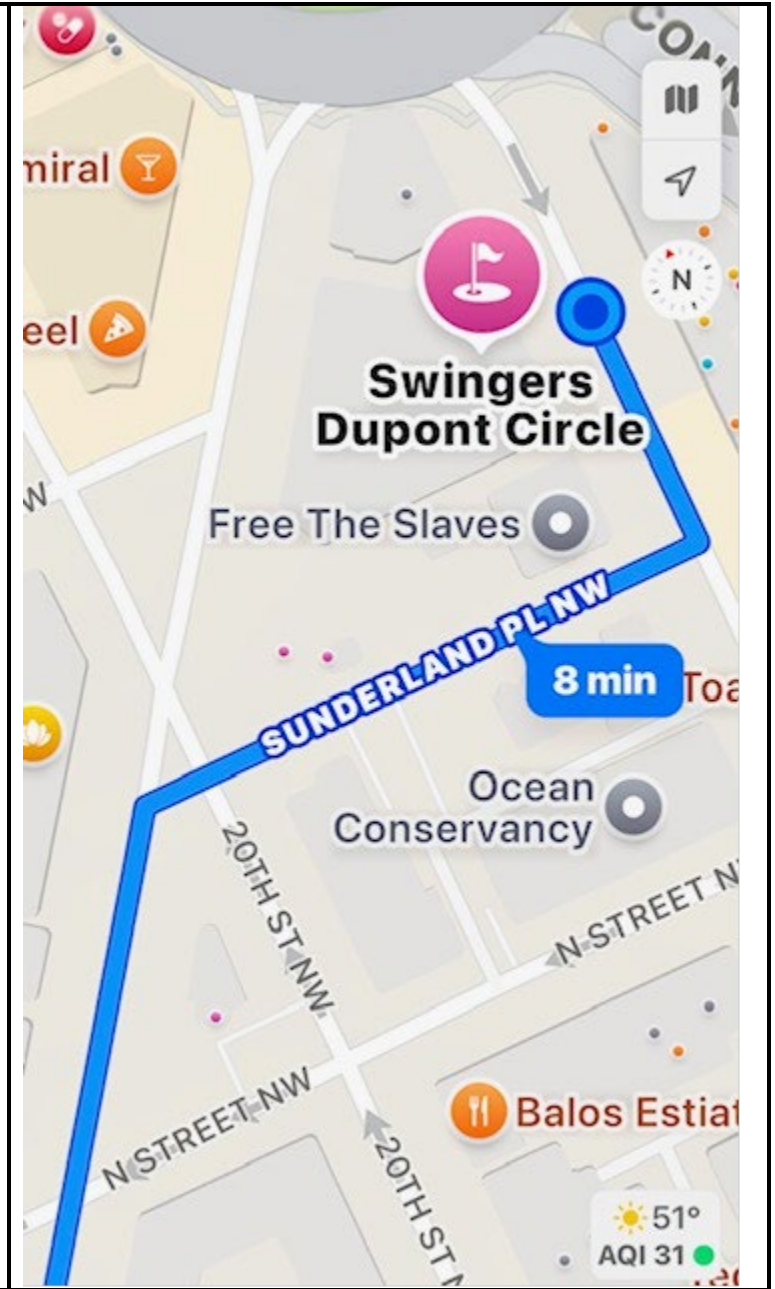
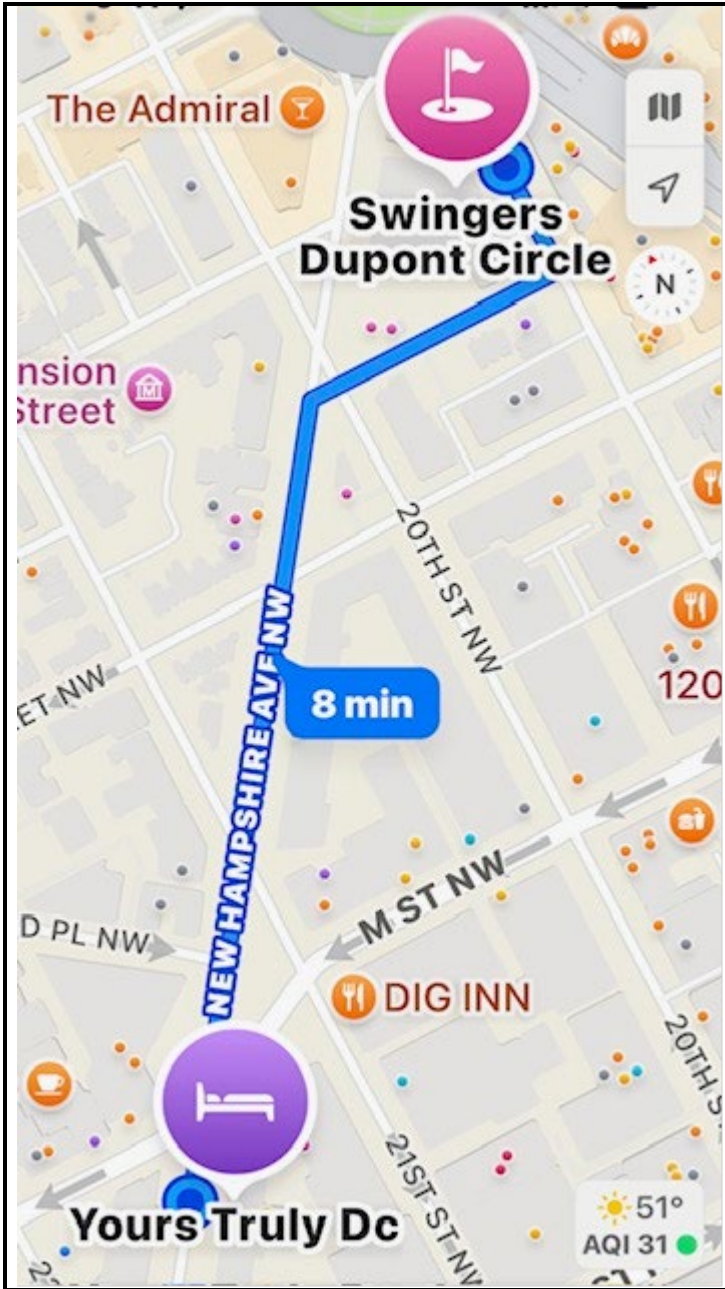
*EAC: External Advisory Committee

**2025 Clin-STAR and Beeson Meetings
Contact List**

FIRST:	LAST:	INSTITUTION:	ROLE	E-MAIL:	research insterest key words
Sue	Zieman		Guest		
Stephanie	Zuo	University of Virginia	Beeson Travel Awardee	jkt6ma@uvahealth.org	pelvic floor disorders, urinary incontinence, nursing home

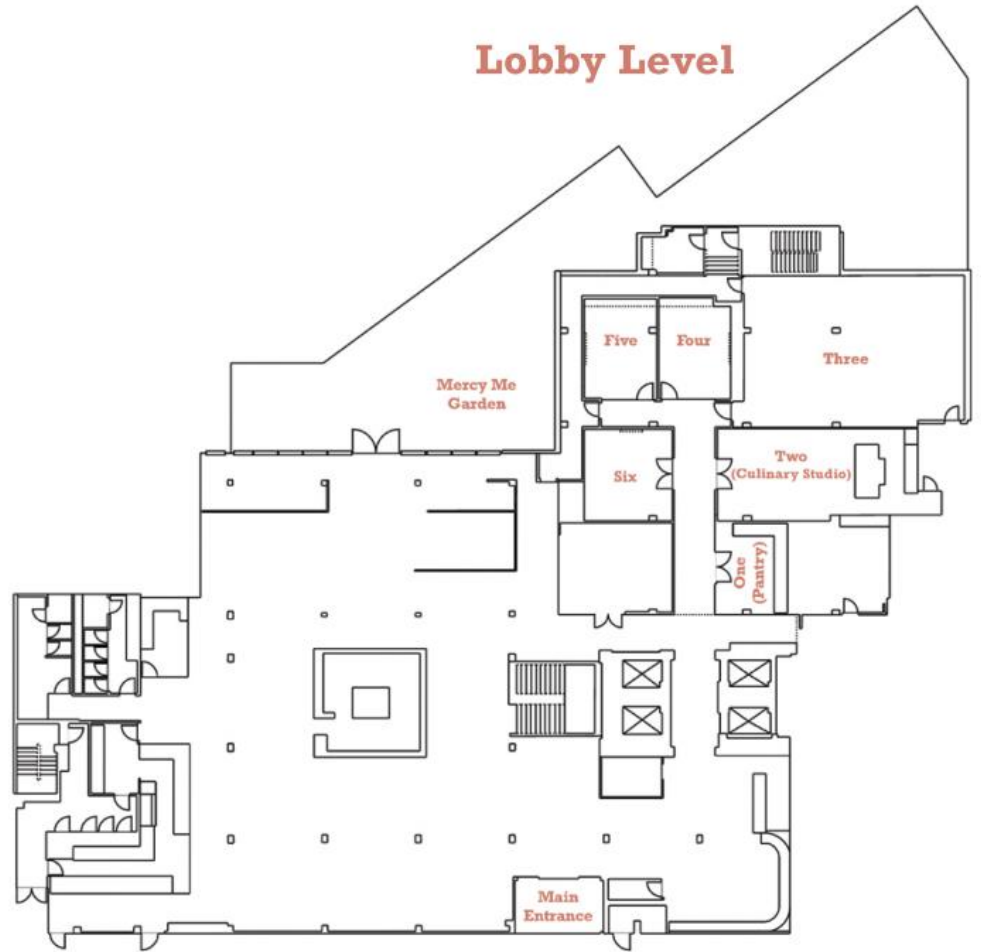
*EAC: External Advisory Committee

Friday, November 21, 6:00 – 9:00 pm
Map to Swinger's Dupont Circle, 1330 19th St NW
Also Google Map Directions [Here](#)

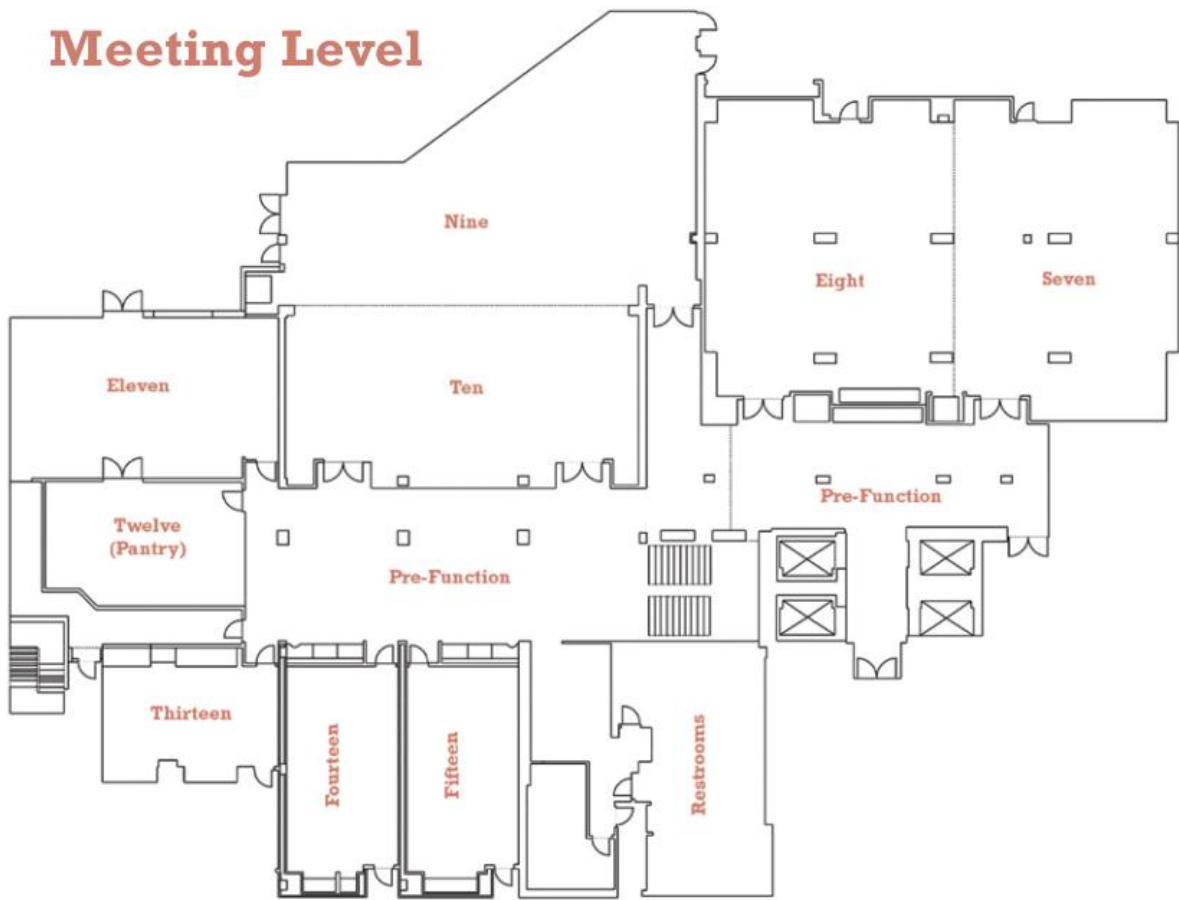


YOURS
DC
TRULY,

Lobby Level



Meeting Level



2025 Safety Plan for the Clin-STAR and Beeson Annual Meetings

We look forward to seeing you at the upcoming Clin-STAR and/or Beeson Annual Meeting! We are committed to creating an environment where everyone can participate without fear of discrimination, harassment, or violence of any kind. We actively encourage meeting wellness and recognize that all attendees' contributions/actions are important to fostering a culture of civility and inclusion. This is essential to strengthening all programmatic elements of the meeting and ensuring all voices are heard. We are sensitive to any special needs of attendees. As part of the registration process, all attendees are encouraged to reach out if they have a specific need for accommodation to support their full participation.

You are required to review the safety plan prior to the meeting and let us know if you have any questions or concerns prior to, during, or after the meeting.

Expected Conduct

By participating in the Clin-STAR or Beeson Annual Meeting, you agree to abide by the following code of conduct:

- Be considerate and respectful to all meeting attendees, as well as hotel and other service providers, and other hotel guests.
- Communicate openly and thoughtfully and encourage others to do the same.
- Refrain from harassing, discriminatory, or demeaning conduct.
- Comply with all rules, policies, and procedures of the hotel.
- Comply with all applicable laws and regulations in the location where the meeting is held.

Unacceptable conduct

Harassment of any kind by any meeting attendee will not be tolerated. Unacceptable behaviors include (but are not limited to) intimidation, violence, offensive/unbecoming behavior, unwelcome advances, unwanted touching, bullying, threats or stalking; inappropriate contact; inappropriate requests for sexual favors; all other verbal, visual or physical conduct of a sexual nature; offensive comments, drawings, pictures, cartoons, innuendos, or other sexually-oriented verbal or written statements (including text messages, emails, social media posts, etc.)

Discrimination on the basis of gender or gender identity, sexual orientation, age, disability, physical appearance, race, religion, national origin, or ethnicity will not be tolerated. Harassment presented in a joking manner is still harassment and constitutes unacceptable behavior. Retaliation for reporting harassment is also unacceptable, as is reporting an incident in bad faith.

Reporting Procedures

If you believe you or another meeting participant has been subject to conduct that violates this code, or if you witness such conduct, you are encouraged to report the violation to one of the meeting PIs or AFAR staff, while onsite at the meeting or as soon after the meeting as possible. This can be done in person at the meeting, by phone or email. Contact details are below. All reported concerns will be treated seriously and investigated promptly. All meeting participants are expected to cooperate fully and honestly with any investigation. Any concerns

will be handled confidentially unless disclosure is legally required. Attendees can reach out to any of these individuals.

Name	Role	Cell Phone	Email
Odette van der Willik	Contact PI (Clin-STAR)	917-703-8640	odette@afar.org
Andrea Sherman	Clin-STAR Staff	845-642-8166	andrea@afar.org
Hattie Herman	AFAR Staff (Beeson)	347-803-3789	hattie@afar.org

You can also file a complaint with the U.S. Department of Health and Human Services Office for Civil Rights (HHS OCR). Details for filing a complaint can be found here: [Filing a Civil Rights Complaint](#). Please note that you can directly file a complaint with HSS OCR; you do not also have to file a complaint with the meeting organizers.

For more information, we also encourage you to visit the NIH's [Find Help webpage](#). This page explains how you can notify NIH about concerns of harassment, including sexual harassment, discrimination, and other forms of inappropriate conduct at NIH-supported conferences.

Zoom Instructions

- Make sure your Zoom application is up to date <https://support.zoom.us/hc/en-us/articles/201362233-Upgrading-Zoom-to-the-latest-version>
- Clin-STAR and Beeson plenary sessions can be accessed through Zoom using this link (same for all days):
<https://us02web.zoom.us/j/85896393400?pwd=bte2z60PYWCJnN8W6Y3faGlscu2sZG.1>
- Use this link to download and import the following iCalendar (.ics) files to your calendar system:
https://us02web.zoom.us/webinar/tZElfu-rpzguGtTgDhQDv0dYoNAIsJlCo9YM/ics?icsToken=DJvDOwcxHueBJ59uiQAALAAAKDe68F9aZOLn9MGe4Z6_ILATk3k6A07JzVTyUHwjLzd6QaLZgGBVn5HY1pYmX0bmkJprGORreWPIjuJ_jAwMDAwMQ

When: Nov 18, 2025 04:30 PM (Eastern Time)
 Nov 19, 2025 09:00 AM
 Nov 20, 2025 09:00 AM
 Nov 21, 2025 09:00 AM

- Please note the calendar invites will cover from the beginning of the first virtual session to the end of the final virtual session each day. There is not a way to specify each session on each day.

Additional Zoom dial-in details: Please click the link below to join the webinar:

<https://us02web.zoom.us/j/85896393400?pwd=bte2z60PYWCJnN8W6Y3faGlscu2sZG.1>

Passcode:805373

Phone one-tap:

+16465588656,,85896393400#,,,,*805373# US (New York)

+16469313860,,85896393400#,,,,*805373# US

Join via audio:

+1 646 558 8656 US (New York)

+1 646 931 3860 US

+1 301 715 8592 US (Washington DC)

+1 305 224 1968 US

+1 309 205 3325 US

+1 312 626 6799 US (Chicago)

+1 669 444 9171 US

+1 669 900 9128 US (San Jose)

+1 689 278 1000 US

+1 719 359 4580 US

+1 253 205 0468 US

+1 253 215 8782 US (Tacoma)

+1 346 248 7799 US (Houston)

+1 360 209 5623 US

+1 386 347 5053 US

+1 507 473 4847 US

+1 564 217 2000 US

Webinar ID: 858 9639 3400

Passcode: 805373

International numbers available: <https://us02web.zoom.us/u/kbCM6R5lka>